

Anti-PWP1 antibody

Cat. No.	ml225444
Package	25 µl/100 µl/200 µl
Storage	-20°C, pH7.4 PBS, 0.05% NaN ₃ , 40% Glycerol

Product overview

Description	Anti-PWP1 rabbit polyclonal antibody
Applications	ELISA, IHC
Immunogen	Fusion protein of human PWP1
Reactivity	Human, Mouse
Content	1.2 mg/ml
Host species	Rabbit
Ig class	Immunogen-specific rabbit IgG
Purification	Antigen affinity purification

Target information

Symbol	PWP1
Full name	PWP1 homolog, endonuclein
Synonyms	IEF-SSP-9502
Swissprot	Q13610

Target Background

The protein encoded by this gene contains several WD-40 repeats and is found mostly in the nucleus. The expression and localization of this protein are cell cycle dependent. Expression of this gene is upregulated in pancreatic adenocarcinoma. Three transcript variants encoding different isoforms have been found for this gene.

订购热线: 4008-898-798

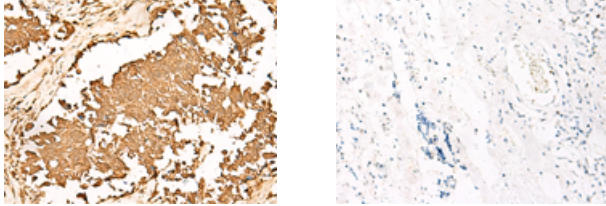
Applications

Immunohistochemistry

Predicted cell location: Nucleus

Positive control: Human lung cancer

Recommended dilution: 50-300



The image on the left is immunohistochemistry of paraffin-embedded Human lung cancer tissue using ml225444(PWP1 Antibody) at dilution 1/70, on the right is treated with fusion protein. (Original magnification: $\times 200$)

ELISA

Recommended dilution: 5000-10000

联系电话: 4008-898-798, 021-61725725

联系QQ: 2881505695, 2881505696

邮箱: mlbio_cn@yeah.net

网址: www.mlbio.cn