

Anti-BEX2 antibody

Cat. No.	ml225564
Package	25 µl/100 µl/200 µl
Storage	-20°C, pH7.4 PBS, 0.05% NaN ₃ , 40% Glycerol

Product overview

Description	Anti-BEX2 rabbit polyclonal antibody
Applications	ELISA, IHC
Immunogen	Fusion protein of human BEX2
Reactivity	Human
Content	0.78 mg/ml
Host species	Rabbit
Ig class	Immunogen-specific rabbit IgG
Purification	Antigen affinity purification

Target information

Symbol	BEX2
Full name	brain expressed X-linked 2
Synonyms	BEX1; DJ79P11.1
Swissprot	Q9BXY8

Target Background

This gene belongs to the brain expressed X-linked gene family. The encoded protein interacts with the transcription factor LIM domain only 2 in a DNA-binding complex that recognizes the E-box element and promotes transcription. This gene has been found to be a tumor suppressor that is silenced in human glioma. In breast cancer cells, this gene product modulates apoptosis in response to estrogen and tamoxifen, and enhances the anti-proliferative effect of tamoxifen. Multiple transcript variants encoding different isoforms have been found for this gene.

订购热线: 4008-898-798

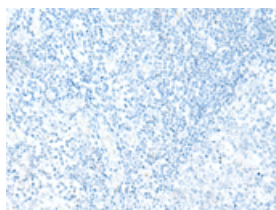
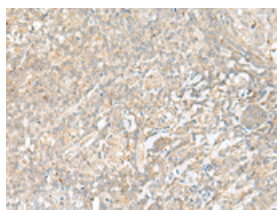
Applications

Immunohistochemistry

Predicted cell location: Cytoplasm or Nucleus

Positive control: Human tonsil

Recommended dilution: 40-200

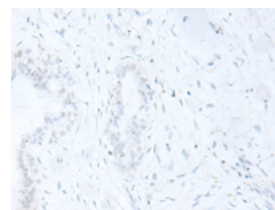
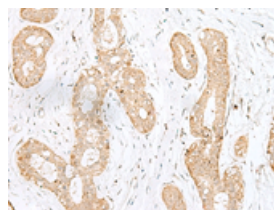


The image on the left is immunohistochemistry of paraffin-embedded Human tonsil tissue using ml225564(BEX2 Antibody) at dilution 1/45, on the right is treated with fusion protein. (Original magnification: $\times 200$)

Predicted cell location: Cytoplasm or Nucleus

Positive control: Human breast cancer

Recommended dilution: 40-200



The image on the left is immunohistochemistry of paraffin-embedded Human breast cancer tissue using ml225564(BEX2 Antibody) at dilution 1/45, on the right is treated with fusion protein. (Original magnification: $\times 200$)

ELISA

Recommended dilution: 5000-10000

联系电话: 4008-898-798, 021-61725725

联系QQ: 2881505695, 2881505696

邮箱: mlbio_cn@yeah.net

网址: www.mlbio.cn