

Anti-PNRC2 antibody

Cat. No.	ml225573
Package	25 µl/100 µl/200 µl
Storage	-20°C, pH7.4 PBS, 0.05% NaN ₃ , 40% Glycerol

Product overview

Description	Anti-PNRC2 rabbit polyclonal antibody
Applications	ELISA, IHC
Immunogen	Fusion protein of human PNRC2
Reactivity	Human, Mouse, Rat
Content	0.54 mg/ml
Host species	Rabbit
Ig class	Immunogen-specific rabbit IgG
Purification	Antigen affinity purification

Target information

Symbol	PNRC2
Full name	proline rich nuclear receptor coactivator 2
Synonyms	
Swissprot	Q9NPJ4

Target Background

Involved in nonsense-mediated mRNA decay (NMD) by acting as a bridge between the mRNA decapping complex and the NMD machinery (PubMed:19150429). May act by targeting the NMD machinery to the P-body and recruiting the decapping machinery to aberrant mRNAs (PubMed:19150429). Required for UPF1/RENT1 localization to the P-body (PubMed:19150429). Plays a role in glucocorticoid receptor-mediated mRNA degradation by interacting with the glucocorticoid receptor NR3C1 in a ligand-dependent manner when it is bound to the 5' UTR of target mRNAs and recruiting the RNA helicase UPF1 and the mRNA-decapping enzyme DCP1A, leading to RNA decay (PubMed:25775514). Also acts as a nuclear receptor coactivator (PubMed:11574675). May play a role in controlling the energy balance between energy storage and energy expenditure (By similarity).

订购热线: 4008-898-798

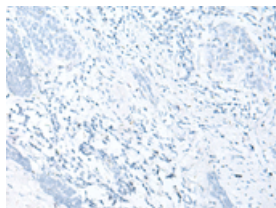
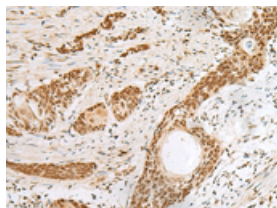
Applications

Immunohistochemistry

Predicted cell location: Cytoplasm and Nucleus

Positive control: Human esophagus cancer

Recommended dilution: 30-150

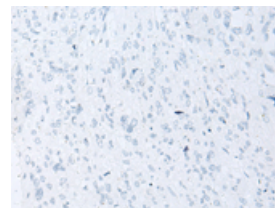
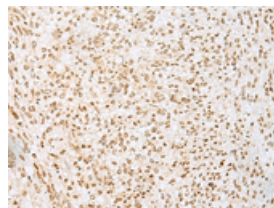


The image on the left is immunohistochemistry of paraffin-embedded Human esophagus cancer tissue using ml225573(PNRC2 Antibody) at dilution 1/30, on the right is treated with fusion protein. (Original magnification: $\times 200$)

Predicted cell location: Cytoplasm and Nucleus

Positive control: Human liver cancer

Recommended dilution: 30-150



The image on the left is immunohistochemistry of paraffin-embedded Human liver cancer tissue using ml225573(PNRC2 Antibody) at dilution 1/30, on the right is treated with fusion protein. (Original magnification: $\times 200$)

ELISA

Recommended dilution: 5000-10000

联系电话: 4008-898-798, 021-61725725

联系QQ: 2881505695, 2881505696

邮箱: mlbio_cn@yeah.net

网址: www.mlbio.cn