

Anti-ARPC5L antibody

Cat. No.	ml225587
Package	25 µl/100 µl/200 µl
Storage	-20°C, pH7.4 PBS, 0.05% NaN ₃ , 40% Glycerol

Product overview

Description	Anti-ARPC5L rabbit polyclonal antibody
Applications	ELISA, IHC
Immunogen	Fusion protein of human ARPC5L
Reactivity	Human, Mouse, Rat
Content	0.84 mg/ml
Host species	Rabbit
Ig class	Immunogen-specific rabbit IgG
Purification	Antigen affinity purification

Target information

Symbol	ARPC5L
Full name	actin related protein 2/3 complex subunit 5 like
Synonyms	ARC16-2
Swissprot	Q9BPX5

Target Background

May function as component of the Arp2/3 complex which is involved in regulation of actin polymerization and together with an activating nucleation-promoting factor (NPF) mediates the formation of branched actin networks.

订购热线: 4008-898-798

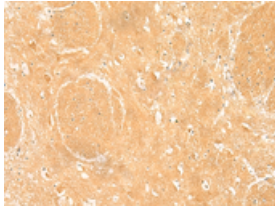
Applications

Immunohistochemistry

Predicted cell location: Cytoplasm

Positive control: Human brain

Recommended dilution: 30-150



The image on the left is immunohistochemistry of paraffin-embedded Human brain tissue using ml225587(ARPC5L Antibody) at dilution 1/30, on the right is treated with fusion protein. (Original magnification: $\times 200$)

ELISA

Recommended dilution: 5000-10000

联系电话: 4008-898-798, 021-61725725

联系QQ: 2881505695, 2881505696

邮箱: mlbio_cn@yeah.net

网址: www.mlbio.cn