

Anti-NIP7 antibody

Cat. No.	ml225616
Package	25 µl/100 µl/200 µl
Storage	-20°C, pH7.4 PBS, 0.05% NaN ₃ , 40% Glycerol

Product overview

Description	Anti-NIP7 rabbit polyclonal antibody
Applications	ELISA, IHC
Immunogen	Fusion protein of human NIP7
Reactivity	Human, Mouse, Rat
Content	0.72 mg/ml
Host species	Rabbit
Ig class	Immunogen-specific rabbit IgG
Purification	Antigen affinity purification

Target information

Symbol	NIP7
Full name	NIP7, nucleolar pre-rRNA processing protein
Synonyms	KD93; CGI-37; HSPC031
Swissprot	Q9Y221

Target Background

Required for proper 34S pre-rRNA processing and 60S ribosome subunit assembly.

订购热线: 4008-898-798

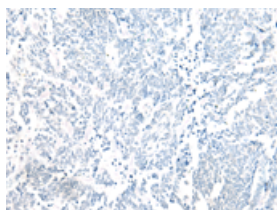
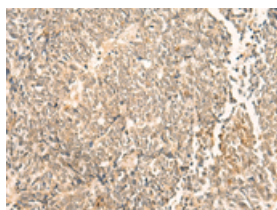
Applications

Immunohistochemistry

Predicted cell location: Nucleus

Positive control: Human lung cancer

Recommended dilution: 30-150

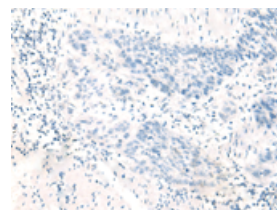
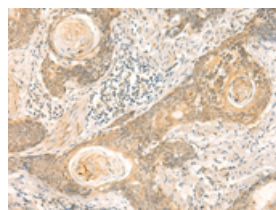


The image on the left is immunohistochemistry of paraffin-embedded Human lung cancer tissue using ml225616(NIP7 Antibody) at dilution 1/50, on the right is treated with fusion protein. (Original magnification: $\times 200$)

Predicted cell location: Nucleus

Positive control: Human esophagus cancer

Recommended dilution: 30-150



The image on the left is immunohistochemistry of paraffin-embedded Human esophagus cancer tissue using ml225616(NIP7 Antibody) at dilution 1/50, on the right is treated with fusion protein. (Original magnification: $\times 200$)

ELISA

Recommended dilution: 5000-10000

联系电话: 4008-898-798, 021-61725725

联系QQ: 2881505695, 2881505696

邮箱: mlbio_cn@yeah.net

网址: www.mlbio.cn