

Anti-GLYATL2 antibody

Cat. No.	ml225710
Package	25 µl/100 µl/200 µl
Storage	-20°C, pH7.4 PBS, 0.05% NaN ₃ , 40% Glycerol

Product overview

Description	Anti-GLYATL2 rabbit polyclonal antibody
Applications	ELISA, IHC
Immunogen	Fusion protein of human GLYATL2
Reactivity	Human
Content	0.72 mg/ml
Host species	Rabbit
Ig class	Immunogen-specific rabbit IgG
Purification	Antigen affinity purification

Target information

Symbol	GLYATL2
Full name	glycine-N-acyltransferase like 2
Synonyms	GATF-B; BXMAS2-10
Swissprot	Q8WU03

Target Background

Mitochondrial acyltransferase which transfers the acyl group to the N-terminus of glycine. Conjugates numerous substrates, such as arachidonoyl-CoA and saturated medium and long-chain acyl-CoAs ranging from chain-length C8:0-CoA to C18:0-CoA, to form a variety of N-acylglycines. Shows a preference for monounsaturated fatty acid oleoyl-CoA (C18:1-CoA) as an acyl donor. Does not exhibit any activity toward C22:6-CoA and chenodeoxycholoyl-CoA, nor toward serine or alanine.

订购热线: 4008-898-798

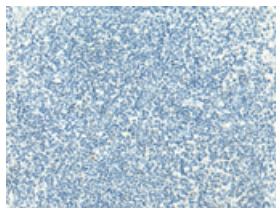
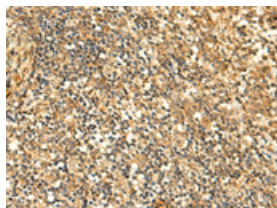
Applications

Immunohistochemistry

Predicted cell location: Cytoplasm

Positive control: Human tonsil

Recommended dilution: 50-300

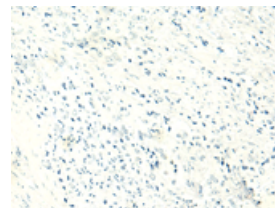
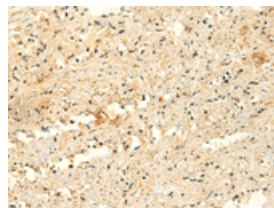


The image on the left is immunohistochemistry of paraffin-embedded Human tonsil tissue using ml225710 (GLYATL2 Antibody) at dilution 1/50, on the right is treated with fusion protein. (Original magnification: $\times 200$)

Predicted cell location: Cytoplasm

Positive control: Human prostate cancer

Recommended dilution: 50-300



The image on the left is immunohistochemistry of paraffin-embedded Human prostate cancer tissue using ml225710 (GLYATL2 Antibody) at dilution 1/50, on the right is treated with fusion protein. (Original magnification: $\times 200$)

ELISA

Recommended dilution: 5000-10000

联系电话: 4008-898-798, 021-61725725

联系QQ: 2881505695, 2881505696

邮箱: mlbio_cn@yeah.net

网址: www.mlbio.cn