

Anti-MKX antibody

Cat. No.	ml225780
Package	25 µl/100 µl/200 µl
Storage	-20°C, pH7.4 PBS, 0.05% NaN ₃ , 40% Glycerol

Product overview

Description	Anti-MKX rabbit polyclonal antibody
Applications	ELISA, IHC
Immunogen	Fusion protein of human MKX
Reactivity	Human, Mouse
Content	1.02 mg/ml
Host species	Rabbit
Ig class	Immunogen-specific rabbit IgG
Purification	Antigen affinity purification

Target information

Symbol	MKX
Full name	mohawk homeobox
Synonyms	IFRX; IRXL1; C10orf48
Swissprot	Q8IYA7

Target Background

The protein encoded by this gene is an IRX family-related homeobox protein that may play a role in cell adhesion. Studies in mice suggest that this protein may be a regulator of tendon development. Two transcript variants encoding the same protein have been found for this gene.

订购热线: 4008-898-798

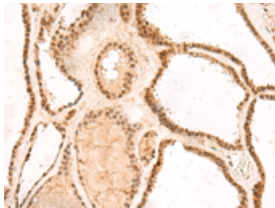
Applications

Immunohistochemistry

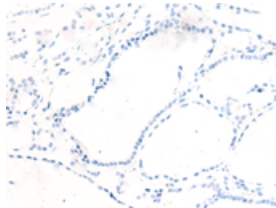
Predicted cell location: Nucleus

Positive control: Human thyroid cancer

Recommended dilution: 50-300



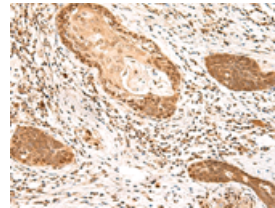
The image on the left is immunohistochemistry of paraffin-embedded Human thyroid cancer tissue using ml225780(MKX Antibody) at dilution 1/60, on the right is treated with fusion protein. (Original magnification: $\times 200$)



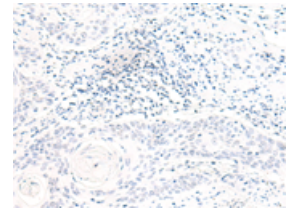
Predicted cell location: Nucleus

Positive control: Human esophagus cancer

Recommended dilution: 50-300



The image on the left is immunohistochemistry of paraffin-embedded Human esophagus cancer tissue using ml225780(MKX Antibody) at dilution 1/60, on the right is treated with fusion protein. (Original magnification: $\times 200$)



ELISA

Recommended dilution: 5000-10000

联系电话: 4008-898-798, 021-61725725

联系QQ: 2881505695, 2881505696

邮箱: mlbio_cn@yeah.net

网址: www.mlbio.cn