

Anti-PCYT2 antibody

Cat. No.	ml225832
Package	25 µl/100 µl/200 µl
Storage	-20°C, pH7.4 PBS, 0.05% NaN ₃ , 40% Glycerol

Product overview

Description	Anti-PCYT2 rabbit polyclonal antibody
Applications	ELISA, IHC
Immunogen	Fusion protein of human PCYT2
Reactivity	Human, Mouse, Rat
Content	0.96 mg/ml
Host species	Rabbit
Ig class	Immunogen-specific rabbit IgG
Purification	Antigen affinity purification

Target information

Symbol	PCYT2
Full name	phosphate cytidyltransferase 2, ethanolamine
Synonyms	ET
Swissprot	Q99447

Target Background

This gene encodes an enzyme that catalyzes the formation of CDP-ethanolamine from CTP and phosphoethanolamine in the Kennedy pathway of phospholipid synthesis. Alternative splicing results in multiple transcript variants.

订购热线: 4008-898-798

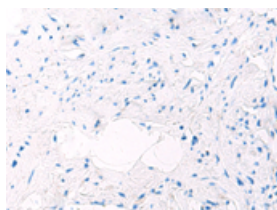
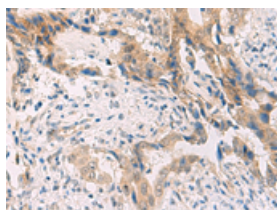
Applications

Immunohistochemistry

Predicted cell location: Cytoplasm

Positive control: Human cervical cancer

Recommended dilution: 40-200

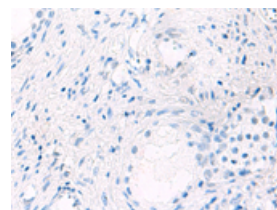
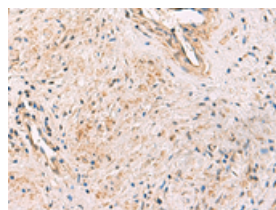


The image on the left is immunohistochemistry of paraffin-embedded Human cervical cancer tissue using ml225832(PCYT2 Antibody) at dilution 1/55, on the right is treated with fusion protein. (Original magnification: $\times 200$)

Predicted cell location: Cytoplasm

Positive control: Human prostate cancer

Recommended dilution: 40-200



The image on the left is immunohistochemistry of paraffin-embedded Human prostate cancer tissue using ml225832(PCYT2 Antibody) at dilution 1/55, on the right is treated with fusion protein. (Original magnification: $\times 200$)

ELISA

Recommended dilution: 5000-10000

联系电话: 4008-898-798, 021-61725725

联系QQ: 2881505695, 2881505696

邮箱: mlbio_cn@yeah.net

网址: www.mlbio.cn