

Anti-TUBD1 antibody

Cat. No.	ml225847
Package	25 µl/100 µl/200 µl
Storage	-20°C, pH7.4 PBS, 0.05% NaN ₃ , 40% Glycerol

Product overview

Description	Anti-TUBD1 rabbit polyclonal antibody
Applications	ELISA, IHC
Immunogen	Fusion protein of human TUBD1
Reactivity	Human, Mouse
Content	1.26 mg/ml
Host species	Rabbit
Ig class	Immunogen-specific rabbit IgG
Purification	Antigen affinity purification

Target information

Symbol	TUBD1
Full name	tubulin delta 1
Synonyms	TUBD
Swissprot	Q9UJT1

Target Background

In the elongating spermatid it is associated with the manchette, a specialized microtubule system present during reshaping of the sperm head.

订购热线: 4008-898-798

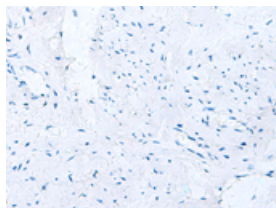
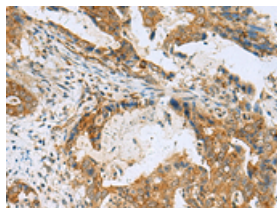
Applications

Immunohistochemistry

Predicted cell location: Cytoplasm

Positive control: Human cervical cancer

Recommended dilution: 50-300

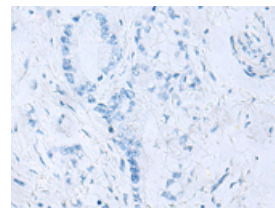
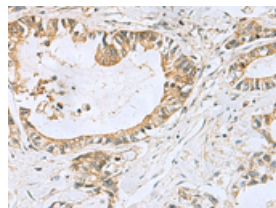


The image on the left is immunohistochemistry of paraffin-embedded Human cervical cancer tissue using ml225847(TUBD1 Antibody) at dilution 1/70, on the right is treated with fusion protein. (Original magnification: $\times 200$)

Predicted cell location: Cytoplasm

Positive control: Human gastric cancer

Recommended dilution: 50-300



The image on the left is immunohistochemistry of paraffin-embedded Human gastric cancer tissue using ml225847(TUBD1 Antibody) at dilution 1/70, on the right is treated with fusion protein. (Original magnification: $\times 200$)

ELISA

Recommended dilution: 5000-10000

联系电话: 4008-898-798, 021-61725725

联系QQ: 2881505695, 2881505696

邮箱: mlbio_cn@yeah.net

网址: www.mlbio.cn