

Anti-ZSWIM1 antibody

Cat. No.	ml225897
Package	25 µl/100 µl/200 µl
Storage	-20°C, pH7.4 PBS, 0.05% NaN ₃ , 40% Glycerol

Product overview

Description	Anti-ZSWIM1 rabbit polyclonal antibody
Applications	ELISA, IHC
Immunogen	Fusion protein of human ZSWIM1
Reactivity	Human, Mouse
Content	1.68 mg/ml
Host species	Rabbit
Ig class	Immunogen-specific rabbit IgG
Purification	Antigen affinity purification

Target information

Symbol	ZSWIM1
Full name	zinc finger SWIM-type containing 1
Synonyms	C20orf162
Swissprot	Q9BR11

Target Background

Zinc-finger proteins contain DNA-binding domains and have a wide variety of functions, most of which encompass some form of transcriptional activation or repression. ZSWIM1 (zinc finger SWIM domain-containing protein 1), also known as C20orf162, is a 485 amino acid protein that contains one SWIM-type zinc finger. The gene encoding ZSWIM1 maps to human chromosome 20. Comprising approximately 2% of the human genome, chromosome 20 contains nearly 63 million bases that encode over 600 genes, some of which are associated with Creutzfeldt-Jakob disease, amyotrophic lateral sclerosis, spinal muscular atrophy, ring chromosome 20 epilepsy syndrome and Alagille syndrome. Additionally, chromosome 20 contains a region with numerous genes which are thought important for seminal production and may be potential targets for male contraception.

订购热线: 4008-898-798

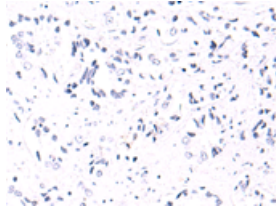
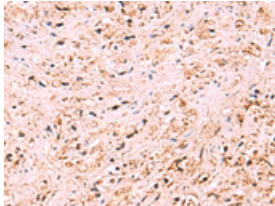
Applications

Immunohistochemistry

Predicted cell location: Cytoplasm

Positive control: Human prostate cancer

Recommended dilution: 50-300



The image on the left is immunohistochemistry of paraffin-embedded Human prostate cancer tissue using ml225897(ZSWIM1 Antibody) at dilution 1/95, on the right is treated with fusion protein. (Original magnification: $\times 200$)

ELISA

Recommended dilution: 5000-10000

联系电话: 4008-898-798, 021-61725725

联系QQ: 2881505695, 2881505696

邮箱: mlbio_cn@yeah.net

网址: www.mlbio.cn