

Anti-PPP2R1A antibody

Cat. No.	ml225938
Package	25 µl/100 µl/200 µl
Storage	-20°C, pH7.4 PBS, 0.05% NaN ₃ , 40% Glycerol

Product overview

Description	Anti-PPP2R1A rabbit polyclonal antibody
Applications	ELISA, IHC
Immunogen	Fusion protein of human PPP2R1A
Reactivity	Human, Mouse
Content	1.14 mg/ml
Host species	Rabbit
Ig class	Immunogen-specific rabbit IgG
Purification	Antigen affinity purification

Target information

Symbol	PPP2R1A
Full name	protein phosphatase 2 scaffold subunit Aalpha
Synonyms	MRD36; PP2AA; PR65A; PP2AAAALPHA; PP2A-Aalpha
Swissprot	P30153

Target Background

This gene encodes a constant regulatory subunit of protein phosphatase 2. Protein phosphatase 2 is one of the four major Ser/Thr phosphatases, and it is implicated in the negative control of cell growth and division. It consists of a common heteromeric core enzyme, which is composed of a catalytic subunit and a constant regulatory subunit, that associates with a variety of regulatory subunits. The constant regulatory subunit A serves as a scaffolding molecule to coordinate the assembly of the catalytic subunit and a variable regulatory B subunit. This gene encodes an alpha isoform of the constant regulatory subunit A. Alternatively spliced transcript variants have been described.

订购热线: 4008-898-798

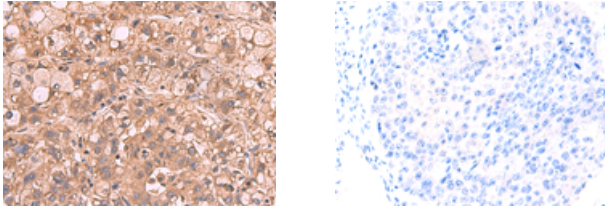
Applications

Immunohistochemistry

Predicted cell location: Cytoplasm

Positive control: Human liver cancer

Recommended dilution: 70-350



The image on the left is immunohistochemistry of paraffin-embedded Human liver cancer tissue using ml225938(PPP2R1A Antibody) at dilution 1/65, on the right is treated with fusion protein. (Original magnification: $\times 200$)

ELISA

Recommended dilution: 5000-10000

联系电话: 4008-898-798, 021-61725725

联系QQ: 2881505695, 2881505696

邮箱: mlbio_cn@yeah.net

网址: www.mlbio.cn