

Anti-ADRB1 antibody

Cat. No.	ml260030
Package	25 µl/100 µl/200 µl
Storage	-20°C, pH7.4 PBS, 0.05% NaN ₃ , 40% Glycerol

Product overview

Description	Anti-ADRB1 rabbit polyclonal antibody
Applications	ELISA, IHC
Immunogen	Synthetic peptide of human ADRB1
Reactivity	Human, Mouse, Rat
Content	0.4 mg/ml
Host species	Rabbit
Ig class	Immunogen-specific rabbit IgG
Purification	Antigen affinity purification

Target information

Symbol	ADRB1
Full name	Beta-1 adrenergic receptor
Synonyms	RHR, B1AR, ADRB1R, BETA1AR
Swissprot	P08588

Target Background

The adrenergic receptors (subtypes alpha 1, alpha 2, beta 1, and beta 2) are a prototypic family of guanine nucleotide binding regulatory protein-coupled receptors that mediate the physiological effects of the hormone epinephrine and the neurotransmitter norepinephrine. Specific polymorphisms in this gene have been shown to affect the resting heart rate and can be involved in heart failure.

订购热线: 4008-898-798

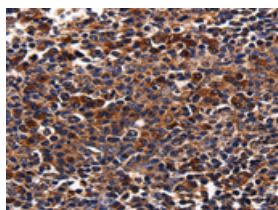
Applications

Immunohistochemistry

Predicted cell location: Cell membrane, Cytoplasm

Positive control: Human tonsil cancer

Recommended dilution: 25-100

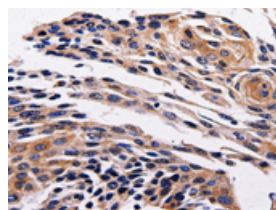


The image is immunohistochemistry of paraffin-embedded Human tonsil cancer tissue using ml260030(ADRB1 Antibody) at dilution 1/25. (Original magnification: ×200)

Predicted cell location: Cell membrane, Cytoplasm

Positive control: Human cervical cancer

Recommended dilution: 25-100



The image is immunohistochemistry of paraffin-embedded Human cervical cancer tissue using ml260030(ADRB1 Antibody) at dilution 1/25. (Original magnification: ×200)

ELISA

Recommended dilution: 1000-5000

联系电话: 4008-898-798, 021-61725725

联系QQ: 2881505695, 2881505696

邮箱: mlbio_cn@yeah.net

网址: www.mlbio.cn