

Anti-RAB39A antibody

Cat. No.	ml260041
Package	25 µl/100 µl/200 µl
Storage	-20°C, pH7.4 PBS, 0.05% NaN ₃ , 40% Glycerol

Product overview

Description	Anti-RAB39A rabbit polyclonal antibody
Applications	ELISA, IHC
Immunogen	Synthetic peptide of human RAB39A
Reactivity	Human, Mouse
Content	0.6 mg/ml
Host species	Rabbit
Ig class	Immunogen-specific rabbit IgG
Purification	Antigen affinity purification

Target information

Symbol	RAB39A
Full name	RAB39A, member RAS oncogene family
Synonyms	RAB39
Swissprot	Q14964

Target Background

This gene encodes a protein which is a member of the Rab family. The Rab family of proteins is a member of the Ras superfamily of monomeric G proteins.[1] Approximately 70 types of Rabs have now been identified in humans. Rab GTPases regulate many steps of membrane traffic, including vesicle formation, vesicle movement along actin and tubulin networks, and membrane fusion. These processes make up the route through which cell surface proteins are trafficked from the Golgi to the plasma membrane and are recycled. Surface protein recycling returns proteins to the surface whose function involves carrying another protein or substance inside the cell, such as the transferrin receptor, or serves as a means of regulating the number of a certain type of protein molecules on the surface.

订购热线: 4008-898-798

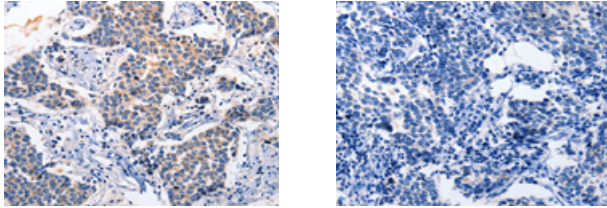
Applications

Immunohistochemistry

Predicted cell location: Cytoplasm

Positive control: Human breast cancer

Recommended dilution: 5-25



The image on the left is immunohistochemistry of paraffin-embedded Human breast cancer tissue using ml260041(RAB39A Antibody) at dilution 1/5, on the right is treated with synthetic peptide. (Original magnification: $\times 200$)

ELISA

Recommended dilution: 1000-2000

联系电话: 4008-898-798, 021-61725725

联系QQ: 2881505695, 2881505696

邮箱: mlbio_cn@yeah.net

网址: www.mlbio.cn