

Anti-BECN1 antibody

Cat. No.	ml260120
Package	25 µl/100 µl/200 µl
Storage	-20°C, pH7.4 PBS, 0.05% NaN ₃ , 40% Glycerol

Product overview

Description	Anti-BECN1 rabbit polyclonal antibody
Applications	ELISA, IHC
Immunogen	Synthetic peptide of human BECN1
Reactivity	Human, Mouse, Rat
Content	0.4 mg/ml
Host species	Rabbit
Ig class	Immunogen-specific rabbit IgG
Purification	Antigen affinity purification

Target information

Symbol	BECN1
Full name	beclin 1, autophagy related
Synonyms	ATG6, VPS30, beclin1
Swissprot	Q14457

Target Background

Beclin-1 is a protein that in humans is encoded by the BECN1 gene. Beclin-1 is also known as autophagy-related gene (Atg) 6. Beclin-1 and its binding partner class III phosphoinositide 3-kinase (PI3K), also named Vps34, which are participates in the regulation of autophagy and has an important role in development, tumorigenesis, and neurodegeneration. Plays a central role in autophagy. Required for the abscission step in cytokinesis. May play a role in antiviral host defense. Protects against infection by a neurovirulent strain of Sindbis virus. Interacts with GOPC and GRID2. Interacts with AMBRA1. Forms a complex with PIK3C3 and PIK3R4 and either UVRAG and KIAA0226/Rubicon, or with ATG14. UVRAG and ATG14 form mutually exclusive complexes through direct competition for BECN1-binding.

订购热线: 4008-898-798

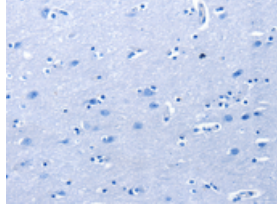
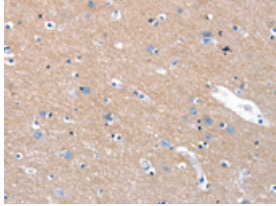
Applications

Immunohistochemistry

Predicted cell location: Cell membrane, Cytoplasm

Positive control: Human brain

Recommended dilution: 10-50

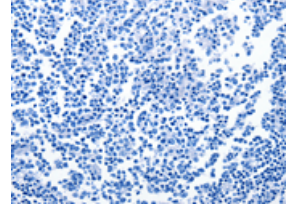
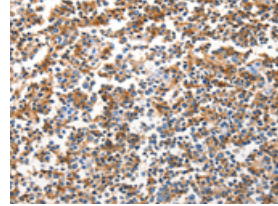


The image on the left is immunohistochemistry of paraffin-embedded Human brain tissue using ml260120(BECN1 Antibody) at dilution 1/15, on the right is treated with synthetic peptide. (Original magnification: ×200)

Predicted cell location: Cell membrane, Cytoplasm

Positive control: Human tonsil

Recommended dilution: 10-50



The image on the left is immunohistochemistry of paraffin-embedded Human tonsil tissue using ml260120(BECN1 Antibody) at dilution 1/15, on the right is treated with synthetic peptide. (Original magnification: ×200)

ELISA

Recommended dilution: 1000-2000

联系电话: 4008-898-798, 021-61725725

联系QQ: 2881505695, 2881505696

邮箱: mlbio_cn@yeah.net

网址: www.mlbio.cn