

## Anti-EPCAM antibody

|                 |   |
|-----------------|---|
| <b>Cat. No.</b> | ml260301  |
| <b>Package</b>  | 25 µl/100 µl/200 µl                                     |
| <b>Storage</b>  | -20°C, pH7.4 PBS, 0.05% NaN <sub>3</sub> , 40% Glycerol |

### Product overview

|                     |                                       |
|---------------------|---------------------------------------|
| <b>Description</b>  | Anti-EPCAM rabbit polyclonal antibody |
| <b>Applications</b> | ELISA, IHC                            |
| <b>Immunogen</b>    | Synthetic peptide of human EPCAM      |
| <b>Reactivity</b>   | Human, Mouse, Rat                     |
| <b>Content</b>      | 0.3 mg/ml                             |
| <b>Host species</b> | Rabbit                                |
| <b>Ig class</b>     | Immunogen-specific rabbit IgG         |
| <b>Purification</b> | Antigen affinity purification         |

### Target information

|                  |   |
|------------------|---|
| <b>Symbol</b>    | EPCAM   |
| <b>Full name</b> | epithelial cell adhesion molecule   |
| <b>Synonyms</b>  | ESA, KSA, M4S1, MK-1, DIAR5, EGP-2, EGP40, KS1/4, MIC18, TROP1, EGP314, HNPCC8, TACSTD1 |
| <b>Swissprot</b> | P16422  |

### Target Background

This gene encodes a carcinoma-associated antigen and is a member of a family that includes at least two type I membrane proteins. EpCAM is a pan-epithelial differentiation antigen that is expressed on almost all carcinomas. Its constitutional function is being elucidated. It is intricately linked with the Cadherin-Catenin pathway and hence the fundamental WNT pathway responsible for intracellular signalling and polarity. It has been used as an immunotherapeutic target in the treatment of gastrointestinal, urological and other carcinomas. It is expressed in undifferentiated pluripotent stem cells. tufting enteropathy.

订购热线: 4008-898-798

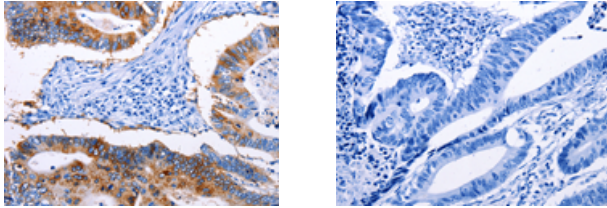
#### Applications

##### Immunohistochemistry

Predicted cell location: Cell membrane, Cytoplasm

Positive control: Human colon cancer

Recommended dilution: 50-200



The image on the left is immunohistochemistry of paraffin-embedded Human colon cancer tissue using ml260301(EPCAM Antibody) at dilution 1/45, on the right is treated with synthetic peptide. (Original magnification:  $\times 200$ )

##### ELISA

Recommended dilution: 1000-5000

联系电话: 4008-898-798, 021-61725725

联系QQ: 2881505695, 2881505696

邮箱: [mlbio\\_cn@yeah.net](mailto:mlbio_cn@yeah.net)

网址: [www.mlbio.cn](http://www.mlbio.cn)