

Anti-FOXO3 antibody

Cat. No.	ml260364
Package	25 µl/100 µl/200 µl
Storage	-20°C, pH7.4 PBS, 0.05% NaN ₃ , 40% Glycerol

Product overview

Description	Anti-FOXO3 rabbit polyclonal antibody
Applications	ELISA, IHC
Immunogen	Synthetic peptide of human FOXO3
Reactivity	Human, Mouse
Content	0.2 mg/ml
Host species	Rabbit
Ig class	Immunogen-specific rabbit IgG
Purification	Antigen affinity purification

Target information

Symbol	FOXO3
Full name	forkhead box O3
Synonyms	FOXO2, AF6q21, FKHRL1, FOXO3A, FKHRL1P2
Swissprot	O43524

Target Background

This gene belongs to the forkhead family of transcription factors which are characterized by a distinct forkhead domain. This gene likely functions as a trigger for apoptosis through expression of genes necessary for cell death. Translocation of this gene with the MLL gene is associated with secondary acute leukemia. Alternatively spliced transcript variants encoding the same protein have been observed. Interacts with YWHAB/14-3-3-beta and YWHAZ/14-3-3-zeta, which are required for cytosolic sequestration. Upon oxidative stress, interacts with STK4/MST1, which disrupts interaction with YWHAB/14-3-3-beta and leads to nuclear translocation. Interacts with PIM1. Interacts with DDIT3/CHOP.

订购热线: 4008-898-798

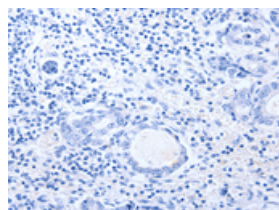
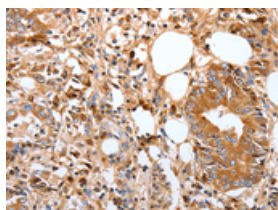
Applications

Immunohistochemistry

Predicted cell location: Cytoplasm, Nucleus

Positive control: Human stomach cancer

Recommended dilution: 50-150

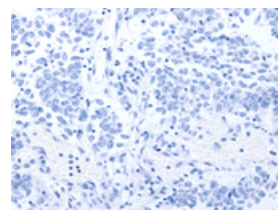
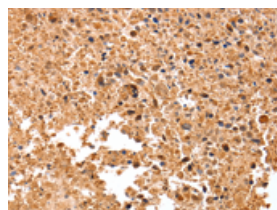


The image on the left is immunohistochemistry of paraffin-embedded Human stomach cancer tissue using ml260364(FOXO3 Antibody) at dilution 1/17, on the right is treated with synthetic peptide. (Original magnification: $\times 200$)

Predicted cell location: Cytoplasm, Nucleus

Positive control: Human lung cancer

Recommended dilution: 50-150



The image on the left is immunohistochemistry of paraffin-embedded Human lung cancer tissue using ml260364(FOXO3 Antibody) at dilution 1/17, on the right is treated with synthetic peptide. (Original magnification: $\times 200$)

ELISA

Recommended dilution: 1000-5000

联系电话: 4008-898-798, 021-61725725

联系QQ: 2881505695, 2881505696

邮箱: mlbio_cn@yeah.net

网址: www.mlbio.cn