

Anti-HINT2 antibody

Cat. No.	ml260477
Package	25 µl/100 µl/200 µl
Storage	-20°C, pH7.4 PBS, 0.05% NaN ₃ , 40% Glycerol

Product overview

Description	Anti-HINT2 rabbit polyclonal antibody
Applications	ELISA, IHC
Immunogen	Synthetic peptide of human HINT2
Reactivity	Human
Content	0.5 mg/ml
Host species	Rabbit
Ig class	Immunogen-specific rabbit IgG
Purification	Antigen affinity purification

Target information

Symbol	HINT2
Full name	histidine triad nucleotide binding protein 2
Synonyms	HIT-17
Swissprot	Q9BX68

Target Background

Histidine triad proteins, such as HINT2, are nucleotide hydrolases and transferases that act on the alpha-phosphate of ribonucleotides. Hydrolase probably involved in steroid biosynthesis. May play a role in apoptosis. Has adenosine phosphoramidase activity. High expression in liver and pancreas. Expression is significantly down-regulated in hepatocellular carcinoma (HCC) patients.

订购热线: 4008-898-798

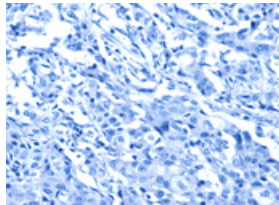
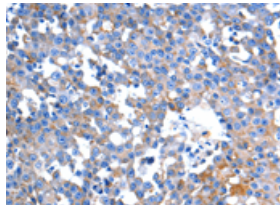
Applications

Immunohistochemistry

Predicted cell location: Cytoplasm

Positive control: Human breast cancer

Recommended dilution: 25-100

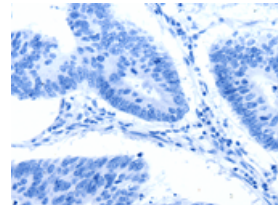
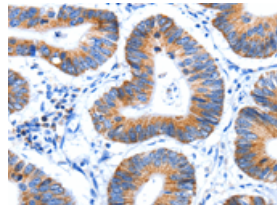


The image on the left is immunohistochemistry of paraffin-embedded Human breast cancer tissue using ml260477(HINT2 Antibody) at dilution 1/60, on the right is treated with synthetic peptide. (Original magnification: $\times 200$)

Predicted cell location: Cytoplasm

Positive control: Human colon cancer

Recommended dilution: 25-100



The image on the left is immunohistochemistry of paraffin-embedded Human colon cancer tissue using ml260477(HINT2 Antibody) at dilution 1/60, on the right is treated with synthetic peptide. (Original magnification: $\times 200$)

ELISA

Recommended dilution: 1000-5000

联系电话: 4008-898-798, 021-61725725

联系QQ: 2881505695, 2881505696

邮箱: mlbio_cn@yeah.net

网址: www.mlbio.cn