

## Anti-IGFBP3 antibody

<b>Cat. No.</b>	ml260507
<b>Package</b>	25 µl/100 µl/200 µl
<b>Storage</b>	-20°C, pH7.4 PBS, 0.05% NaN <sub>3</sub> , 40% Glycerol

### Product overview

<b>Description</b>	Anti-IGFBP3 rabbit polyclonal antibody
<b>Applications</b>	ELISA, IHC
<b>Immunogen</b>	Synthetic peptide of human IGFBP3
<b>Reactivity</b>	Human, Mouse, Rat
<b>Content</b>	1.6 mg/ml
<b>Host species</b>	Rabbit
<b>Ig class</b>	Immunogen-specific rabbit IgG
<b>Purification</b>	Antigen affinity purification

### Target information

<b>Symbol</b>	IGFBP3
<b>Full name</b>	insulin-like growth factor binding protein 3
<b>Synonyms</b>	IBP3; BP-53
<b>Swissprot</b>	P17936

### Target Background

This gene is a member of the insulin-like growth factor binding protein (IGFBP) family and encodes a protein with an IGFBP domain and a thyroglobulin type-I domain. The protein forms a ternary complex with insulin-like growth factor acid-labile subunit (IGFALS) and either insulin-like growth factor (IGF) I or II. In this form, it circulates in the plasma, prolonging the half-life of IGFs and altering their interaction with cell surface receptors. Alternate transcriptional splice variants, encoding different isoforms, have been characterized.

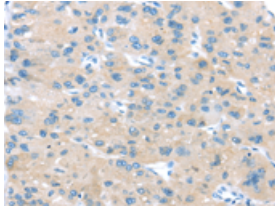
## Applications

### Immunohistochemistry

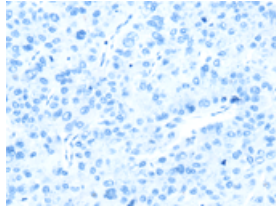
Predicted cell location: Cytoplasm

Positive control: Human liver cancer

Recommended dilution: 25-100



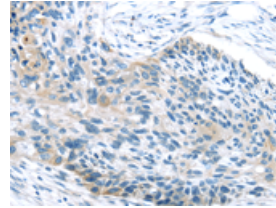
The image on the left is immunohistochemistry of paraffin-embedded Human liver cancer tissue using ml260507(IGFBP3 Antibody) at dilution 1/45, on the right is treated with synthetic peptide. (Original magnification:  $\times 200$ )



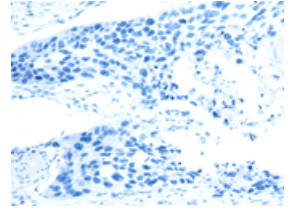
Predicted cell location: Cytoplasm

Positive control: Human esophagus cancer

Recommended dilution: 25-100



The image on the left is immunohistochemistry of paraffin-embedded Human esophagus cancer tissue using ml260507(IGFBP3 Antibody) at dilution 1/45, on the right is treated with synthetic peptide. (Original magnification:  $\times 200$ )



### ELISA

Recommended dilution: 2000-5000

联系电话: 4008-898-798, 021-61725725

联系QQ: 2881505695, 2881505696

邮箱: [mlbio\\_cn@yeah.net](mailto:mlbio_cn@yeah.net)

网址: [www.mlbio.cn](http://www.mlbio.cn)