

## Anti-ITGA7 antibody

<b>Cat. No.</b>	ml260516
<b>Package</b>	25 µl/100 µl/200 µl
<b>Storage</b>	-20°C, pH7.4 PBS, 0.05% NaN <sub>3</sub> , 40% Glycerol

### Product overview

<b>Description</b>	Anti-ITGA7 rabbit polyclonal antibody
<b>Applications</b>	ELISA, IHC
<b>Immunogen</b>	Synthetic peptide of human ITGA7
<b>Reactivity</b>	Human, Mouse, Rat
<b>Content</b>	0.2 mg/ml
<b>Host species</b>	Rabbit
<b>Ig class</b>	Immunogen-specific rabbit IgG
<b>Purification</b>	Antigen affinity purification

### Target information

<b>Symbol</b>	ITGA7
<b>Full name</b>	integrin, alpha 7
<b>Synonyms</b>	
<b>Swissprot</b>	Q13683

### Target Background

The protein encoded by this gene belongs to the integrin alpha chain family. Integrins are heterodimeric integral membrane proteins composed of an alpha chain and a beta chain. They mediate a wide spectrum of cell-cell and cell-matrix interactions, and thus play a role in cell migration, morphologic development, differentiation, and metastasis. This protein functions as a receptor for the basement membrane protein laminin-1. It is mainly expressed in skeletal and cardiac muscles and may be involved in differentiation and migration processes during myogenesis. Defects in this gene are associated with congenital myopathy. Alternatively spliced transcript variants encoding different isoforms have been noted for this gene.

订购热线: 4008-898-798

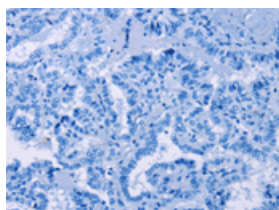
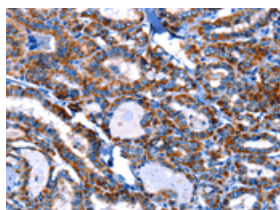
## Applications

### Immunohistochemistry

Predicted cell location: Cell membrane, Cytoplasm

Positive control: Human thyroid cancer

Recommended dilution: 10-50

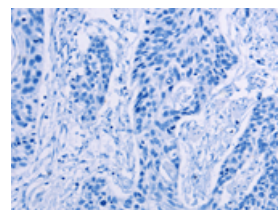
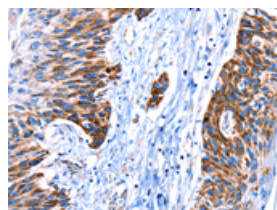


The image on the left is immunohistochemistry of paraffin-embedded Human thyroid cancer tissue using ml260516(ITGA7 Antibody) at dilution 1/10, on the right is treated with synthetic peptide. (Original magnification:  $\times 200$ )

Predicted cell location: Cell membrane, Cytoplasm

Positive control: Human esophagus cancer

Recommended dilution: 10-50



The image on the left is immunohistochemistry of paraffin-embedded Human esophagus cancer tissue using ml260516(ITGA7 Antibody) at dilution 1/10, on the right is treated with synthetic peptide. (Original magnification:  $\times 200$ )

### ELISA

Recommended dilution: 1000-2000

联系电话: 4008-898-798, 021-61725725

联系QQ: 2881505695, 2881505696

邮箱: [mlbio\\_cn@yeah.net](mailto:mlbio_cn@yeah.net)

网址: [www.mlbio.cn](http://www.mlbio.cn)