

## Anti-MMP21 antibody

<b>Cat. No.</b>	ml260625
<b>Package</b>	25 µl/100 µl/200 µl
<b>Storage</b>	-20°C, pH7.4 PBS, 0.05% NaN <sub>3</sub> , 40% Glycerol

### Product overview

<b>Description</b>	Anti-MMP21 rabbit polyclonal antibody
<b>Applications</b>	ELISA, IHC
<b>Immunogen</b>	Synthetic peptide of human MMP21
<b>Reactivity</b>	Human, Mouse
<b>Content</b>	0.3 mg/ml
<b>Host species</b>	Rabbit
<b>Ig class</b>	Immunogen-specific rabbit IgG
<b>Purification</b>	Antigen affinity purification

### Target information

<b>Symbol</b>	MMP21
<b>Full name</b>	matrix metalloproteinase 21
<b>Synonyms</b>	no me
<b>Swissprot</b>	Q8N119

### Target Background

This gene encodes a member of the matrix metalloproteinase family. Proteins in this family are involved in the breakdown of extracellular matrix for both normal physiological processes, such as embryonic development, reproduction, and tissue remodeling, and disease processes, such as asthma and metastasis. The encoded protein may play an important role in embryogenesis, particularly in neuronal cells, as well as in lymphocyte development and survival.

订购热线: 4008-898-798

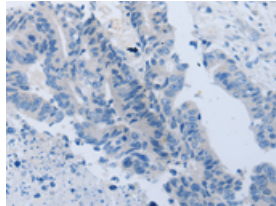
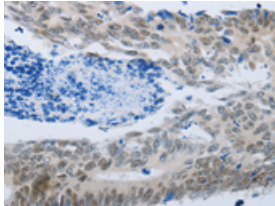
#### Applications

##### Immunohistochemistry

Predicted cell location: cytoplasm, Nucleus

Positive control: Human colon cancer

Recommended dilution: 25-100

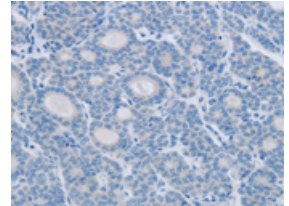
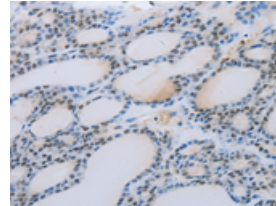


The image on the left is immunohistochemistry of paraffin-embedded Human colon cancer tissue using ml260625(MMP21 Antibody) at dilution 1/45, on the right is treated with synthetic peptide. (Original magnification:  $\times 200$ )

Predicted cell location: cytoplasm, Nucleus

Positive control: Human thyroid cancer

Recommended dilution: 25-100



The image on the left is immunohistochemistry of paraffin-embedded Human thyroid cancer tissue using ml260625(MMP21 Antibody) at dilution 1/45, on the right is treated with synthetic peptide. (Original magnification:  $\times 200$ )

##### ELISA

Recommended dilution: 2000-5000

联系电话: 4008-898-798, 021-61725725

联系QQ: 2881505695, 2881505696

邮箱: [mlbio\\_cn@yeah.net](mailto:mlbio_cn@yeah.net)

网址: [www.mlbio.cn](http://www.mlbio.cn)