

Anti-MMP19 antibody

Cat. No.	ml260629
Package	25 µl/100 µl/200 µl
Storage	-20°C, pH7.4 PBS, 0.05% NaN ₃ , 40% Glycerol

Product overview

Description	Anti-MMP19 rabbit polyclonal antibody
Applications	ELISA, IHC
Immunogen	Synthetic peptide of human MMP19
Reactivity	Human
Content	0.3 mg/ml
Host species	Rabbit
Ig class	Immunogen-specific rabbit IgG
Purification	Antigen affinity purification

Target information

Symbol	MMP19
Full name	Matrix metalloproteinase 19
Synonyms	MMP18, RASI-1
Swissprot	Q99542

Target Background

Proteins of the matrix metalloproteinase (MMP) family are involved in the breakdown of extracellular matrix in normal physiological processes, such as embryonic development, reproduction, and tissue remodeling, as well as in disease processes, such as arthritis and metastasis. Most MMP's are secreted as inactive proproteins which are activated when cleaved by extracellular proteinases. This protein is expressed in human epidermis and it has a role in cellular proliferation as well as migration and adhesion to type I collagen. Multiple transcript variants encoding distinct isoforms have been identified for this gene.

订购热线: 4008-898-798

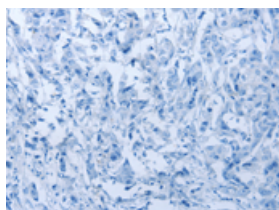
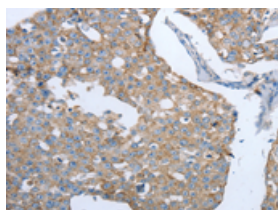
Applications

Immunohistochemistry

Predicted cell location: Cytoplasm, ExtraCellular matrix

Positive control: Human breast cancer

Recommended dilution: 15-50

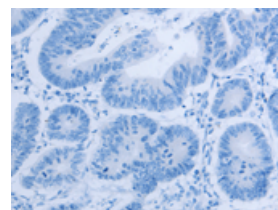
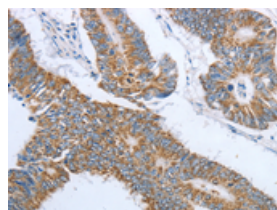


The image on the left is immunohistochemistry of paraffin-embedded Human breast cancer tissue using ml260629(MMP19 Antibody) at dilution 1/15, on the right is treated with synthetic peptide. (Original magnification: $\times 200$)

Predicted cell location: Cytoplasm, ExtraCellular matrix

Positive control: Human colon cancer

Recommended dilution: 15-50



The image on the left is immunohistochemistry of paraffin-embedded Human colon cancer tissue using ml260629(MMP19 Antibody) at dilution 1/15, on the right is treated with synthetic peptide. (Original magnification: $\times 200$)

ELISA

Recommended dilution: 1000-2000

联系电话: 4008-898-798, 021-61725725

联系QQ: 2881505695, 2881505696

邮箱: mlbio_cn@yeah.net

网址: www.mlbio.cn