

Anti-MMP26 antibody

Cat. No.	ml260631
Package	25 µl/100 µl/200 µl
Storage	-20°C, pH7.4 PBS, 0.05% NaN ₃ , 40% Glycerol

Product overview

Description	Anti-MMP26 rabbit polyclonal antibody
Applications	ELISA, IHC
Immunogen	Synthetic peptide of human MMP26
Reactivity	Human
Content	1.2 mg/ml
Host species	Rabbit
Ig class	Immunogen-specific rabbit IgG
Purification	Antigen affinity purification

Target information

Symbol	MMP26
Full name	matrix metalloproteinase 26
Synonyms	
Swissprot	Q9NRE1

Target Background

Proteins of the matrix metalloproteinase (MMP) family are involved in the breakdown of extracellular matrix in normal physiological processes, such as embryonic development, reproduction, and tissue remodeling, as well as in disease processes, such as arthritis and metastasis. The encoded preproprotein is proteolytically processed to generate the mature enzyme. This enzyme may degrade collagen type IV, fibronectin, fibrinogen, and beta-casein, and activate matrix metalloproteinase-9 by cleavage. The protein differs from most MMP family members in that it lacks a conserved C-terminal protein domain. The encoded protein may promote cell invasion in multiple human cancers.

订购热线: 4008-898-798

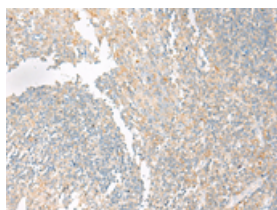
Applications

Immunohistochemistry

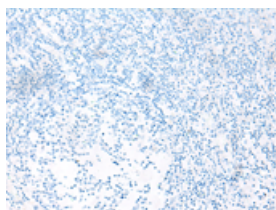
Predicted cell location: Secreted

Positive control: Human tonsil

Recommended dilution: 25-100



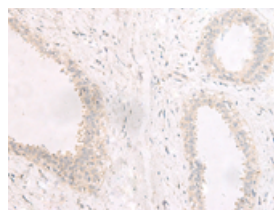
The image on the left is immunohistochemistry of paraffin-embedded Human tonsil tissue using ml260631(MMP26 Antibody) at dilution 1/40, on the right is treated with synthetic peptide. (Original magnification: $\times 200$)



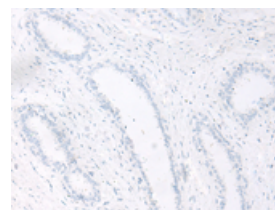
Predicted cell location: Secreted

Positive control: Human breast cancer

Recommended dilution: 25-100



The image on the left is immunohistochemistry of paraffin-embedded Human breast cancer tissue using ml260631(MMP26 Antibody) at dilution 1/40, on the right is treated with synthetic peptide. (Original magnification: $\times 200$)



ELISA

Recommended dilution: 5000-10000

联系电话: 4008-898-798, 021-61725725

联系QQ: 2881505695, 2881505696

邮箱: mlbio_cn@yeah.net

网址: www.mlbio.cn