

Anti-SLC9A3R2 antibody

Cat. No.	ml260737
Package	25 µl/100 µl/200 µl
Storage	-20°C, pH7.4 PBS, 0.05% NaN ₃ , 40% Glycerol

Product overview

Description	Anti-SLC9A3R2 rabbit polyclonal antibody
Applications	ELISA, IHC
Immunogen	Synthetic peptide of human SLC9A3R2
Reactivity	Human, Mouse, Rat
Content	0.4 mg/ml
Host species	Rabbit
Ig class	Immunogen-specific rabbit IgG
Purification	Antigen affinity purification

Target information

Symbol	SLC9A3R2
Full name	solute carrier family 9, subfamily A (NHE3, cation proton antiporter 3), member 3 regulator 2
Synonyms	SIP1; OCTS2; SIP-1; TKA-1; E3KARP; NHERF2; NHE3RF2; NHERF-2
Swissprot	Q15599

Target Background

This gene encodes a member of the NHERF family of PDZ scaffolding proteins. These proteins mediate many cellular processes by binding to and regulating the membrane expression and protein-protein interactions of membrane receptors and transport proteins. The encoded protein plays a role in intestinal sodium absorption by regulating the activity of the sodium/hydrogen exchanger 3, and may also regulate the cystic fibrosis transmembrane regulator (CFTR) ion channel. Alternatively spliced transcript variants encoding multiple isoforms have been observed for this gene.

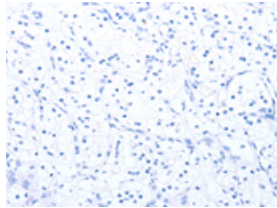
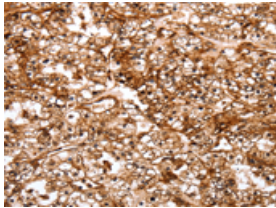
Applications

Immunohistochemistry

Predicted cell location: Cytoplasm, Endomembrane system,
Peripheral membrane protein

Positive control: Human renal cancer

Recommended dilution: 50-200

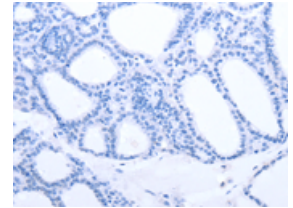
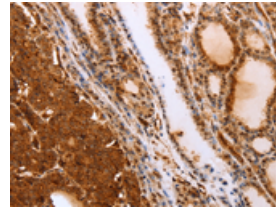


The image on the left is immunohistochemistry of paraffin-embedded Human renal cancer tissue using ml260737(SLC9A3R2 Antibody) at dilution 1/40, on the right is treated with synthetic peptide. (Original magnification: $\times 200$)

Predicted cell location: Cytoplasm, Endomembrane system,
Peripheral membrane protein

Positive control: Human thyroid cancer

Recommended dilution: 50-200



The image on the left is immunohistochemistry of paraffin-embedded Human thyroid cancer tissue using ml260737(SLC9A3R2 Antibody) at dilution 1/40, on the right is treated with synthetic peptide. (Original magnification: $\times 200$)

ELISA

Recommended dilution: 2000-5000

联系电话: 4008-898-798, 021-61725725

联系QQ: 2881505695, 2881505696

邮箱: mlbio_cn@yeah.net

网址: www.mlbio.cn