

Anti-TOP1MT antibody

Cat. No.	ml260774
Package	25 µl/100 µl/200 µl
Storage	-20°C, pH7.4 PBS, 0.05% NaN ₃ , 40% Glycerol

Product overview

Description	Anti-TOP1MT rabbit polyclonal antibody
Applications	ELISA, IHC
Immunogen	Synthetic peptide of human TOP1MT
Reactivity	Human
Content	0.2 mg/ml
Host species	Rabbit
Ig class	Immunogen-specific rabbit IgG
Purification	Antigen affinity purification

Target information

Symbol	TOP1MT
Full name	topoisomerase (DNA) I, mitochondrial
Synonyms	
Swissprot	Q969P6

Target Background

This gene encodes a mitochondrial DNA topoisomerase that plays a role in the modification of DNA topology. The encoded protein is a type IB topoisomerase and catalyzes the transient breaking and rejoining of DNA to relieve tension and DNA supercoiling generated in the mitochondrial genome during replication and transcription. Alternatively spliced transcript variants encoding multiple isoforms have been observed for this gene.

订购热线: 4008-898-798

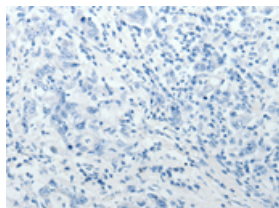
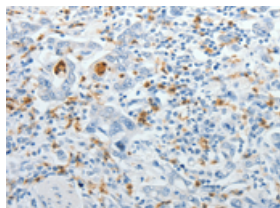
Applications

Immunohistochemistry

Predicted cell location: Cytoplasm, Nucleus

Positive control: Human gasrtic cancer

Recommended dilution: 5-20

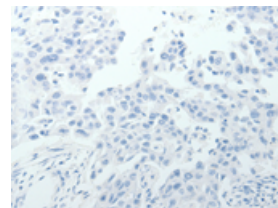
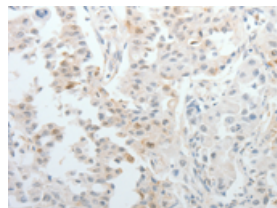


The image on the left is immunohistochemistry of paraffin-embedded Human gasrtic cancer tissue using ml260774(TOP1MT Antibody) at dilution 1/10, on the right is treated with synthetic peptide. (Original magnification: $\times 200$)

Predicted cell location: Cytoplasm, Nucleus

Positive control: Human lung cancer

Recommended dilution: 5-20



The image on the left is immunohistochemistry of paraffin-embedded Human lung cancer tissue using ml260774(TOP1MT Antibody) at dilution 1/10, on the right is treated with synthetic peptide. (Original magnification: $\times 200$)

ELISA

Recommended dilution: 1000-2000

联系电话: 4008-898-798, 021-61725725

联系QQ: 2881505695, 2881505696

邮箱: mlbio_cn@yeah.net

网址: www.mlbio.cn