

Anti-ABI3BP antibody

Cat. No.	ml260814
Package	25 µl/100 µl/200 µl
Storage	-20°C, pH7.4 PBS, 0.05% NaN ₃ , 40% Glycerol

Product overview

Description	Anti-ABI3BP rabbit polyclonal antibody
Applications	ELISA, IHC
Immunogen	Synthetic peptide of human ABI3BP
Reactivity	Human
Content	0.2 mg/ml
Host species	Rabbit
Ig class	Immunogen-specific rabbit IgG
Purification	Antigen affinity purification

Target information

Symbol	ABI3BP
Full name	ABI family, member 3 (NESH) binding protein
Synonyms	TARSH; NESHBP
Swissprot	Q7Z7G0

Target Background

TARSH gene expression is dramatically induced in mouse embryonic fibroblasts (MEFs) replicative senescence and suppressed in human lung carcinoma specimens and thyroid carcinomas. The experiment observed that ABI3 expression is reduced or lost in most carcinomas but also that there is a positive correlation between ABI3 and ABI3BP expression. And it express high levels in brain, heart, lung, liver, pancreas kidney and placenta.

订购热线: 4008-898-798

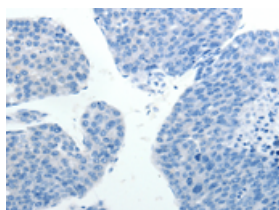
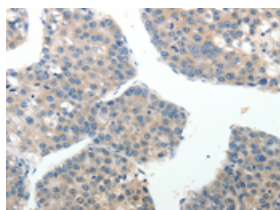
Applications

Immunohistochemistry

Predicted cell location: Secreted

Positive control: Human liver cancer

Recommended dilution: 15-50

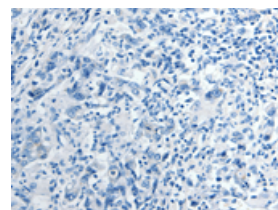
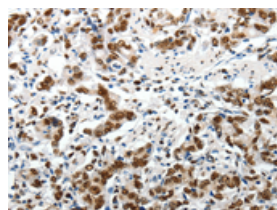


The image on the left is immunohistochemistry of paraffin-embedded Human liver cancer tissue using ml260814 (ABI3BP Antibody) at dilution 1/20, on the right is treated with synthetic peptide. (Original magnification: $\times 200$)

Predicted cell location: Secreted

Positive control: Human gastric cancer

Recommended dilution: 15-50



The image on the left is immunohistochemistry of paraffin-embedded Human gastric cancer tissue using ml260814 (ABI3BP Antibody) at dilution 1/20, on the right is treated with synthetic peptide. (Original magnification: $\times 200$)

ELISA

Recommended dilution: 1000-5000

联系电话: 4008-898-798, 021-61725725

联系QQ: 2881505695, 2881505696

邮箱: mlbio_cn@yeah.net

网址: www.mlbio.cn