

Anti-ANAPC1 antibody

Cat. No.	ml260882
Package	25 µl/100 µl/200 µl
Storage	-20°C, pH7.4 PBS, 0.05% NaN ₃ , 40% Glycerol

Product overview

Description	Anti-ANAPC1 rabbit polyclonal antibody
Applications	ELISA, IHC
Immunogen	Synthetic peptide of human ANAPC1
Reactivity	Human, Mouse
Content	0.3 mg/ml
Host species	Rabbit
Ig class	Immunogen-specific rabbit IgG
Purification	Antigen affinity purification

Target information

Symbol	ANAPC1
Full name	anaphase promoting complex subunit 1
Synonyms	APC1; MCPR; TSG24
Swissprot	Q9H1A4

Target Background

This gene encodes a subunit of the anaphase-promoting complex. This complex is an E3 ubiquitin ligase that regulates progression through the metaphase to anaphase portion of the cell cycle by ubiquitinating proteins which targets them for degradation. Component of the anaphase promoting complex/cyclosome (APC/C), a cell cycle-regulated E3 ubiquitin ligase that controls progression through mitosis and the G1 phase of the cell cycle.

订购热线: 4008-898-798

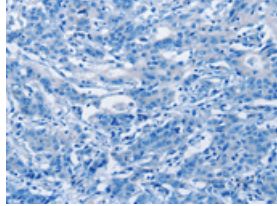
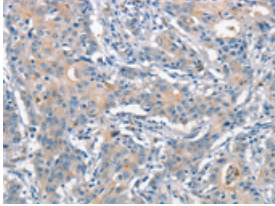
Applications

Immunohistochemistry

Predicted cell location: Cytoplasm

Positive control: Human gasrtic cancer

Recommended dilution: 15-50

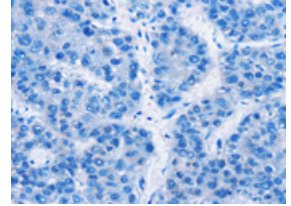
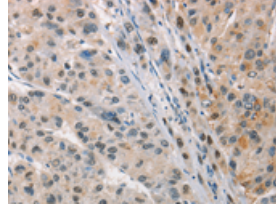


The image on the left is immunohistochemistry of paraffin-embedded Human gasrtic cancer tissue using ml260882(ANAPC1 Antibody) at dilution 1/15, on the right is treated with synthetic peptide. (Original magnification: ×200)

Predicted cell location: Cytoplasm

Positive control: Human liver cancer

Recommended dilution: 15-50



The image on the left is immunohistochemistry of paraffin-embedded Human liver cancer tissue using ml260882(ANAPC1 Antibody) at dilution 1/15, on the right is treated with synthetic peptide. (Original magnification: ×200)

ELISA

Recommended dilution: 1000-2000

联系电话: 4008-898-798, 021-61725725

联系QQ: 2881505695, 2881505696

邮箱: mlbio_cn@yeah.net

网址: www.mlbio.cn