

Anti-P2RY12 antibody

Cat. No.	ml260921
Package	25 µl/100 µl/200 µl
Storage	-20°C, pH7.4 PBS, 0.05% NaN ₃ , 40% Glycerol

Product overview

Description	Anti-P2RY12 rabbit polyclonal antibody
Applications	ELISA, IHC
Immunogen	Synthetic peptide of human P2RY12
Reactivity	Human
Content	0.2 mg/ml
Host species	Rabbit
Ig class	Immunogen-specific rabbit IgG
Purification	Antigen affinity purification

Target information

Symbol	P2RY12
Full name	purinergic receptor P2Y, G-protein coupled, 12
Synonyms	HORK3; P2Y12; ADPG-R; BDPLT8; SP1999; P2T(AC); P2Y(AC); P2Y(12)R; P2Y(ADP); P2Y(cyc)
Swissprot	Q9H244

Target Background

The product of this gene belongs to the family of G-protein coupled receptors. This family has several receptor subtypes with different pharmacological selectivity, which overlaps in some cases, for various adenosine and uridine nucleotides. This receptor is involved in platelet aggregation, and is a potential target for the treatment of thromboembolisms and other clotting disorders. Mutations in this gene are implicated in bleeding disorder, platelet type 8 (BDPLT8). Alternative splicing results in multiple transcript variants of this gene.

订购热线: 4008-898-798

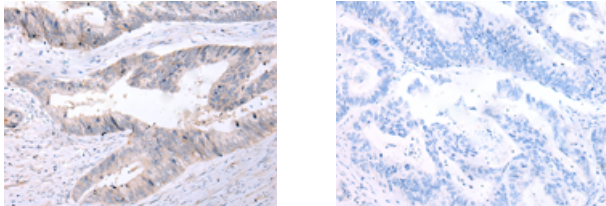
Applications

Immunohistochemistry

Predicted cell location: Cytoplasm

Positive control: Human colorectal cancer

Recommended dilution: 10-50



The image on the left is immunohistochemistry of paraffin-embedded Human colorectal cancer tissue using ml260921(P2RY12 Antibody) at dilution 1/20, on the right is treated with synthetic peptide. (Original magnification: $\times 200$)

ELISA

Recommended dilution: 1000-2000

联系电话: 4008-898-798, 021-61725725

联系QQ: 2881505695, 2881505696

邮箱: mlbio_cn@yeah.net

网址: www.mlbio.cn