

Anti-NOTCH3 antibody

Cat. No.	ml261043
Package	25 µl/100 µl/200 µl
Storage	-20°C, pH7.4 PBS, 0.05% NaN ₃ , 40% Glycerol

Product overview

Description	Anti-NOTCH3 rabbit polyclonal antibody
Applications	ELISA, IHC
Immunogen	Synthetic peptide of human NOTCH3
Reactivity	Human, Mouse, Rat
Content	0.6 mg/ml
Host species	Rabbit
Ig class	Immunogen-specific rabbit IgG
Purification	Antigen affinity purification

Target information

Symbol	NOTCH3
Full name	notch 3
Synonyms	IMF2; LMNS; CASIL; CADASIL; CADASIL1
Swissprot	Q9UM47

Target Background

This gene encodes the third discovered human homologue of the *Drosophila melanogaster* type I membrane protein notch. In *Drosophila*, notch interaction with its cell-bound ligands (delta, serrate) establishes an intercellular signalling pathway that plays a key role in neural development. Homologues of the notch-ligands have also been identified in human, but precise interactions between these ligands and the human notch homologues remains to be determined. Mutations in NOTCH3 have been identified as the underlying cause of cerebral autosomal dominant arteriopathy with subcortical infarcts and leukoencephalopathy (CADASIL).

订购热线: 4008-898-798

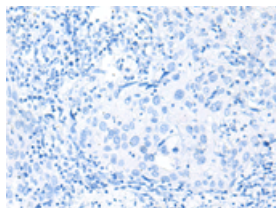
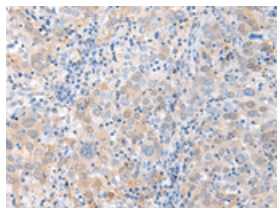
Applications

Immunohistochemistry

Predicted cell location: Cytoplasm or Nucleus

Positive control: Human cervical cancer

Recommended dilution: 20-100

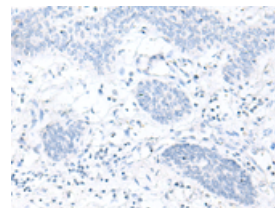
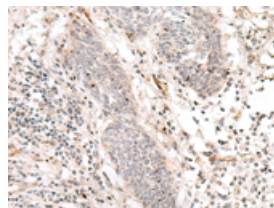


The image on the left is immunohistochemistry of paraffin-embedded Human cervical cancer tissue using ml261043(NOTCH3 Antibody) at dilution 1/20, on the right is treated with synthetic peptide. (Original magnification: ×200)

Predicted cell location: Cytoplasm or Nucleus

Positive control: Human esophagus cancer

Recommended dilution: 20-100



The image on the left is immunohistochemistry of paraffin-embedded Human esophagus cancer tissue using ml261043(NOTCH3 Antibody) at dilution 1/20, on the right is treated with synthetic peptide. (Original magnification: ×200)

ELISA

Recommended dilution: 5000-10000

联系电话: 4008-898-798, 021-61725725

联系QQ: 2881505695, 2881505696

邮箱: mlbio_cn@yeah.net

网址: www.mlbio.cn