

## Anti-ADORA1 antibody

<b>Cat. No.</b>	ml261245
<b>Package</b>	25 µl/100 µl/200 µl
<b>Storage</b>	-20°C, pH7.4 PBS, 0.05% NaN <sub>3</sub> , 40% Glycerol

### Product overview

<b>Description</b>	Anti-ADORA1 rabbit polyclonal antibody
<b>Applications</b>	ELISA, IHC
<b>Immunogen</b>	Synthetic peptide of human ADORA1
<b>Reactivity</b>	Human
<b>Content</b>	0.3 mg/ml
<b>Host species</b>	Rabbit
<b>Ig class</b>	Immunogen-specific rabbit IgG
<b>Purification</b>	Antigen affinity purification

### Target information

<b>Symbol</b>	ADORA1
<b>Full name</b>	adenosine A1 receptor
<b>Synonyms</b>	RDC7
<b>Swissprot</b>	P30542

### Target Background

The protein encoded by this gene is an adenosine receptor that belongs to the G-protein coupled receptor 1 family. There are 3 types of adenosine receptors, each with a specific pattern of ligand binding and tissue distribution, and together they regulate a diverse set of physiologic functions. The type A1 receptors inhibit adenylyl cyclase, and play a role in the fertilization process. Animal studies also suggest a role for A1 receptors in kidney function and ethanol intoxication. Transcript variants with alternative splicing in the 5' UTR have been found for this gene.

订购热线: 4008-898-798

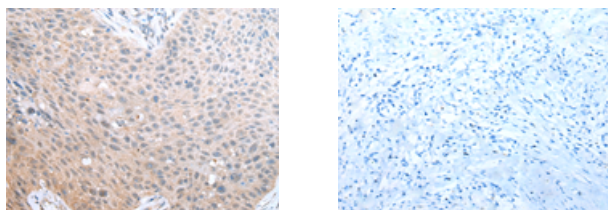
#### Applications

##### Immunohistochemistry

Predicted cell location: Cell membrane

Positive control: Human lung cancer

Recommended dilution: 25-100



The image on the left is immunohistochemistry of paraffin-embedded Human lung cancer tissue using ml261245(ADORA1 Antibody) at dilution 1/20, on the right is treated with synthetic peptide. (Original magnification:  $\times 200$ )

##### ELISA

Recommended dilution: 2000-5000

联系电话: 4008-898-798, 021-61725725

联系QQ: 2881505695, 2881505696

邮箱: [mlbio\\_cn@yeah.net](mailto:mlbio_cn@yeah.net)

网址: [www.mlbio.cn](http://www.mlbio.cn)