

Anti-ADCY1 antibody

Cat. No.	ml261247
Package	25 µl/100 µl/200 µl
Storage	-20°C, pH7.4 PBS, 0.05% NaN ₃ , 40% Glycerol

Product overview

Description	Anti-ADCY1 rabbit polyclonal antibody
Applications	ELISA, IHC
Immunogen	Synthetic peptide of human ADCY1
Reactivity	Human
Content	0.4 mg/ml
Host species	Rabbit
Ig class	Immunogen-specific rabbit IgG
Purification	Antigen affinity purification

Target information

Symbol	ADCY1
Full name	adenylate cyclase 1 (brain)
Synonyms	AC1
Swissprot	Q08828

Target Background

This gene encodes a form of adenylate cyclase expressed in brain. A similar protein in mouse is involved in pattern formation of the brain.

订购热线: 4008-898-798

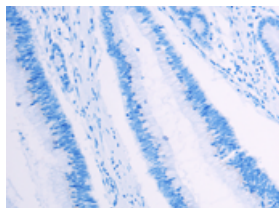
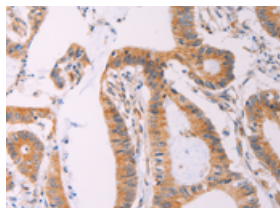
Applications

Immunohistochemistry

Predicted cell location: Cytoplasm

Positive control: Human colon cancer

Recommended dilution: 100-300

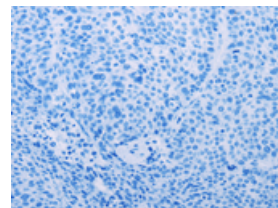
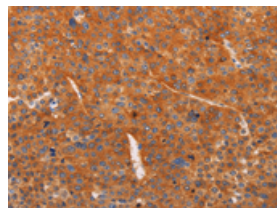


The image on the left is immunohistochemistry of paraffin-embedded Human colon cancer tissue using ml261247(ADCY1 Antibody) at dilution 1/60, on the right is treated with synthetic peptide. (Original magnification: $\times 200$)

Predicted cell location: Cytoplasm

Positive control: Human liver cancer

Recommended dilution: 100-300



The image on the left is immunohistochemistry of paraffin-embedded Human liver cancer tissue using ml261247(ADCY1 Antibody) at dilution 1/60, on the right is treated with synthetic peptide. (Original magnification: $\times 200$)

ELISA

Recommended dilution: 2000-10000

联系电话: 4008-898-798, 021-61725725

联系QQ: 2881505695, 2881505696

邮箱: mlbio_cn@yeah.net

网址: www.mlbio.cn