

## Anti-NRG2 antibody

|                 |   |
|-----------------|---|
| <b>Cat. No.</b> | ml261359  |
| <b>Package</b>  | 25 µl/100 µl/200 µl                                     |
| <b>Storage</b>  | -20°C, pH7.4 PBS, 0.05% NaN <sub>3</sub> , 40% Glycerol |

### Product overview

|                     |                                      |
|---------------------|--------------------------------------|
| <b>Description</b>  | Anti-NRG2 rabbit polyclonal antibody |
| <b>Applications</b> | ELISA, IHC                           |
| <b>Immunogen</b>    | Synthetic peptide of human NRG2      |
| <b>Reactivity</b>   | Human, Mouse, Rat                    |
| <b>Content</b>      | 1 mg/ml                              |
| <b>Host species</b> | Rabbit                               |
| <b>Ig class</b>     | Immunogen-specific rabbit IgG        |
| <b>Purification</b> | Antigen affinity purification        |

### Target information

|                  |                  |
|------------------|------------------|
| <b>Symbol</b>    | NRG2             |
| <b>Full name</b> | neuregulin 2     |
| <b>Synonyms</b>  | DON1; HRG2; NTAK |
| <b>Swissprot</b> | O14511           |

### Target Background

This gene encodes a novel member of the neuregulin family of growth and differentiation factors. Through interaction with the ERBB family of receptors, this protein induces the growth and differentiation of epithelial, neuronal, glial, and other types of cells. The gene consists of 12 exons and the genomic structure is similar to that of neuregulin 1, another member of the neuregulin family of ligands. The products of these genes mediate distinct biological processes by acting at different sites in tissues and eliciting different biological responses in cells. This gene is located close to the region for demyelinating Charcot-Marie-Tooth disease locus, but is not responsible for this disease. Alternative transcript variants encoding distinct isoforms have been described.

订购热线: 4008-898-798

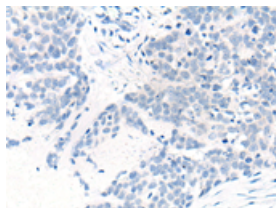
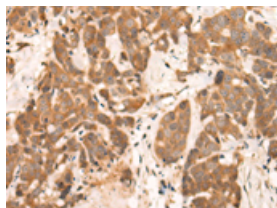
## Applications

### Immunohistochemistry

Predicted cell location: Secreted

Positive control: Human thyroid cancer

Recommended dilution: 50-300

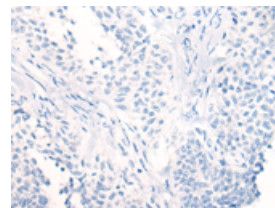
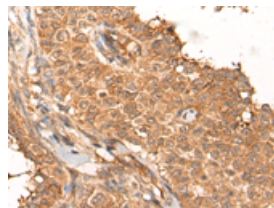


The image on the left is immunohistochemistry of paraffin-embedded Human thyroid cancer tissue using ml261359(NRG2 Antibody) at dilution 1/65, on the right is treated with synthetic peptide. (Original magnification:  $\times 200$ )

Predicted cell location: Secreted

Positive control: Human ovarian cancer

Recommended dilution: 50-300



The image on the left is immunohistochemistry of paraffin-embedded Human ovarian cancer tissue using ml261359(NRG2 Antibody) at dilution 1/65, on the right is treated with synthetic peptide. (Original magnification:  $\times 200$ )

### ELISA

Recommended dilution: 5000-10000

联系电话: 4008-898-798, 021-61725725

联系QQ: 2881505695, 2881505696

邮箱: [mlbio\\_cn@yeah.net](mailto:mlbio_cn@yeah.net)

网址: [www.mlbio.cn](http://www.mlbio.cn)