

## Anti-NLRP7 antibody

|                 |   |
|-----------------|---|
| <b>Cat. No.</b> | ml261456  |
| <b>Package</b>  | 25 µl/100 µl/200 µl                                     |
| <b>Storage</b>  | -20°C, pH7.4 PBS, 0.05% NaN <sub>3</sub> , 40% Glycerol |

### Product overview

|                     |                                       |
|---------------------|---------------------------------------|
| <b>Description</b>  | Anti-NLRP7 rabbit polyclonal antibody |
| <b>Applications</b> | ELISA, IHC                            |
| <b>Immunogen</b>    | Synthetic peptide of human NLRP7      |
| <b>Reactivity</b>   | Human                                 |
| <b>Content</b>      | 0.5 mg/ml                             |
| <b>Host species</b> | Rabbit                                |
| <b>Ig class</b>     | Immunogen-specific rabbit IgG         |
| <b>Purification</b> | Antigen affinity purification         |

### Target information

|                  |   |
|------------------|---|
| <b>Symbol</b>    | NLRP7                                     |
| <b>Full name</b> | NLR family, pyrin domain containing 7     |
| <b>Synonyms</b>  | HYDM; PAN7; NALP7; NOD12; PYPAF3; CLR19.4 |
| <b>Swissprot</b> | Q8WX94                                    |

### Target Background

This gene encodes a member of the NACHT, leucine rich repeat, and PYD containing (NLRP) protein family. It has an N-terminal pyrin domain, followed by a NACHT domain, a NACHT-associated domain (NAD), and a C-terminal leucine-rich repeat (LRR) region. NLRP proteins are implicated in the activation of proinflammatory caspases through multiprotein complexes called inflammasomes. This gene may act as a feedback regulator of caspase-1-dependent interleukin 1-beta secretion. Alternative splicing results in multiple transcript variants encoding different isoforms.

订购热线: 4008-898-798

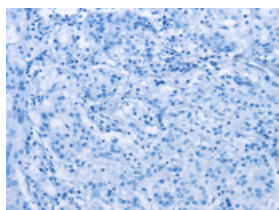
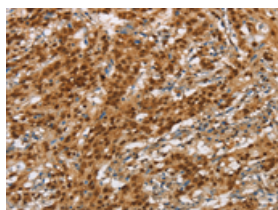
## Applications

### Immunohistochemistry

Predicted cell location: Cytoplasm or Nucleus

Positive control: Human gasrtic cancer

Recommended dilution: 100-300

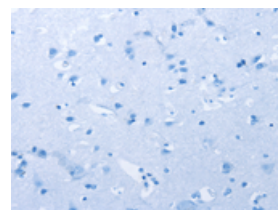
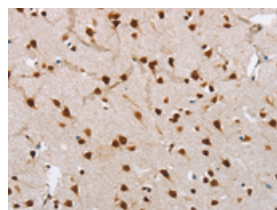


The image on the left is immunohistochemistry of paraffin-embedded Human gasrtic cancer tissue using ml261456(NLRP7 Antibody) at dilution 1/60, on the right is treated with synthetic peptide. (Original magnification: ×200)

Predicted cell location: Cytoplasm or Nucleus

Positive control: Human brain

Recommended dilution: 100-300



The image on the left is immunohistochemistry of paraffin-embedded Human brain tissue using ml261456(NLRP7 Antibody) at dilution 1/60, on the right is treated with synthetic peptide. (Original magnification: ×200)

### ELISA

Recommended dilution: 2000-10000

联系电话: 4008-898-798, 021-61725725

联系QQ: 2881505695, 2881505696

邮箱: [mlbio\\_cn@yeah.net](mailto:mlbio_cn@yeah.net)

网址: [www.mlbio.cn](http://www.mlbio.cn)