

## Anti-MCL1 antibody

|                 |   |
|-----------------|---|
| <b>Cat. No.</b> | ml261457  |
| <b>Package</b>  | 25 µl/100 µl/200 µl                                     |
| <b>Storage</b>  | -20°C, pH7.4 PBS, 0.05% NaN <sub>3</sub> , 40% Glycerol |

### Product overview

|                     |                                      |
|---------------------|--------------------------------------|
| <b>Description</b>  | Anti-MCL1 rabbit polyclonal antibody |
| <b>Applications</b> | ELISA, IHC                           |
| <b>Immunogen</b>    | Synthetic peptide of human MCL1      |
| <b>Reactivity</b>   | Human, Mouse, Rat                    |
| <b>Content</b>      | 0.7 mg/ml                            |
| <b>Host species</b> | Rabbit                               |
| <b>Ig class</b>     | Immunogen-specific rabbit IgG        |
| <b>Purification</b> | Antigen affinity purification        |

### Target information

|                  |   |
|------------------|---|
| <b>Symbol</b>    | MCL1  |
| <b>Full name</b> | myeloid cell leukemia sequence 1 (BCL2-related)                   |
| <b>Synonyms</b>  | TM; EAT; MCL1L; MCL1S; Mcl-1; BCL2L3; MCL1-ES; bcl2-L-3; mcl1/EAT |
| <b>Swissprot</b> | Q07820  |

### Target Background

This gene encodes an anti-apoptotic protein, which is a member of the Bcl-2 family. Alternative splicing results in multiple transcript variants. The longest gene product (isoform 1) enhances cell survival by inhibiting apoptosis while the alternatively spliced shorter gene products (isoform 2 and isoform 3) promote apoptosis and are death-inducing.

订购热线: 4008-898-798

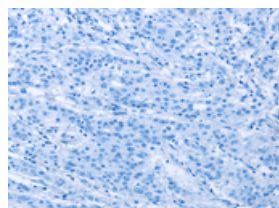
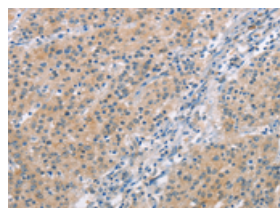
## Applications

### Immunohistochemistry

Predicted cell location: Cytoplasm

Positive control: Human gasrtic cancer

Recommended dilution: 50-200

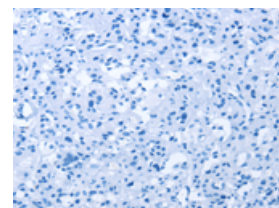
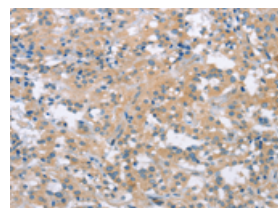


The image on the left is immunohistochemistry of paraffin-embedded Human gasrtic cancer tissue using ml261457(MCL1 Antibody) at dilution 1/60, on the right is treated with synthetic peptide. (Original magnification: ×200)

Predicted cell location: Cytoplasm

Positive control: Human thyroid cancer

Recommended dilution: 50-200



The image on the left is immunohistochemistry of paraffin-embedded Human thyroid cancer tissue using ml261457(MCL1 Antibody) at dilution 1/60, on the right is treated with synthetic peptide. (Original magnification: ×200)

### ELISA

Recommended dilution: 2000-5000

联系电话: 4008-898-798, 021-61725725

联系QQ: 2881505695, 2881505696

邮箱: [mlbio\\_cn@yeah.net](mailto:mlbio_cn@yeah.net)

网址: [www.mlbio.cn](http://www.mlbio.cn)