

Anti-SH2B2 antibody

Cat. No.	ml261464
Package	25 µl/100 µl/200 µl
Storage	-20°C, pH7.4 PBS, 0.05% NaN ₃ , 40% Glycerol

Product overview

Description	Anti-SH2B2 rabbit polyclonal antibody
Applications	ELISA, IHC
Immunogen	Synthetic peptide of human SH2B2
Reactivity	Human, Rat
Content	0.2 mg/ml
Host species	Rabbit
Ig class	Immunogen-specific rabbit IgG
Purification	Antigen affinity purification

Target information

Symbol	SH2B2
Full name	SH2B adaptor protein 2
Synonyms	APS
Swissprot	O14492

Target Background

The protein encoded by this gene is expressed in B lymphocytes and contains pleckstrin homology and src homology 2 (SH2) domains. In Burkitt's lymphoma cell lines, it is tyrosine-phosphorylated in response to B cell receptor stimulation. Because it binds Shc independent of stimulation and Grb2 after stimulation, it appears to play a role in signal transduction from the receptor to the Shc/Grb2 pathway.

订购热线: 4008-898-798

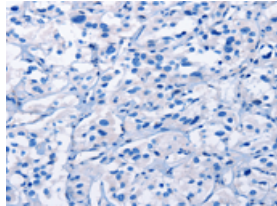
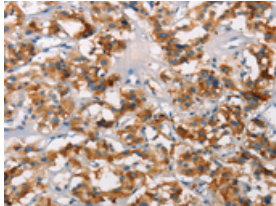
Applications

Immunohistochemistry

Predicted cell location: Cytoplasm

Positive control: Human thyroid cancer

Recommended dilution: 15-50

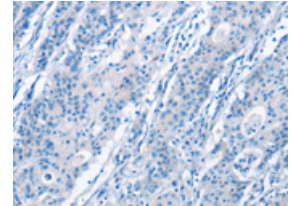
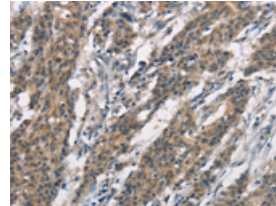


The image on the left is immunohistochemistry of paraffin-embedded Human thyroid cancer tissue using ml261464(SH2B2 Antibody) at dilution 1/15, on the right is treated with synthetic peptide. (Original magnification: $\times 200$)

Predicted cell location: Cytoplasm

Positive control: Human gastric cancer

Recommended dilution: 15-50



The image on the left is immunohistochemistry of paraffin-embedded Human gastric cancer tissue using ml261464(SH2B2 Antibody) at dilution 1/15, on the right is treated with synthetic peptide. (Original magnification: $\times 200$)

ELISA

Recommended dilution: 1000-2000

联系电话: 4008-898-798, 021-61725725

联系QQ: 2881505695, 2881505696

邮箱: mlbio_cn@yeah.net

网址: www.mlbio.cn