

## Anti-ABO antibody

|                 |                                                         |
|-----------------|---------------------------------------------------------|
| <b>Cat. No.</b> | ml261484                                                |
| <b>Package</b>  | 25 µl/100 µl/200 µl                                     |
| <b>Storage</b>  | -20°C, pH7.4 PBS, 0.05% NaN <sub>3</sub> , 40% Glycerol |

### Product overview

|                     |                                     |
|---------------------|-------------------------------------|
| <b>Description</b>  | Anti-ABO rabbit polyclonal antibody |
| <b>Applications</b> | ELISA, IHC                          |
| <b>Immunogen</b>    | Synthetic peptide of human ABO      |
| <b>Reactivity</b>   | Human                               |
| <b>Content</b>      | 0.6 mg/ml                           |
| <b>Host species</b> | Rabbit                              |
| <b>Ig class</b>     | Immunogen-specific rabbit IgG       |
| <b>Purification</b> | Antigen affinity purification       |

### Target information

|                  |                                                                                                                              |
|------------------|------------------------------------------------------------------------------------------------------------------------------|
| <b>Symbol</b>    | ABO                                                                                                                          |
| <b>Full name</b> | ABO blood group (transferase A, alpha 1-3-N-acetylgalactosaminyltransferase; transferase B, alpha 1-3-galactosyltransferase) |
| <b>Synonyms</b>  | GTB; NAGAT; A3GALNT; A3GALT1                                                                                                 |
| <b>Swissprot</b> | P16442                                                                                                                       |

### Target Background

This gene encodes proteins related to the first discovered blood group system, ABO. Which allele is present in an individual determines the blood group. The 'O' blood group is caused by a deletion of guanine-258 near the N-terminus of the protein which results in a frameshift and translation of an almost entirely different protein. Individuals with the A, B, and AB alleles express glycosyltransferase activities that convert the H antigen into the A or B antigen. Other minor alleles have been found for this gene.

订购热线: 4008-898-798

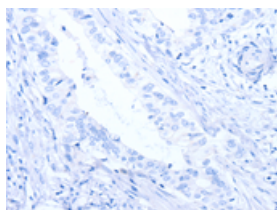
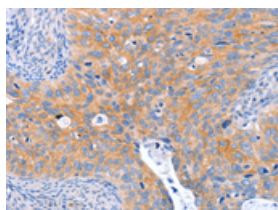
## Applications

### Immunohistochemistry

Predicted cell location: Cytoplasm

Positive control: Human cervical cancer

Recommended dilution: 50-200

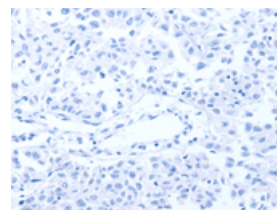
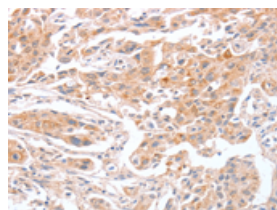


The image on the left is immunohistochemistry of paraffin-embedded Human cervical cancer tissue using ml261484(ABO Antibody) at dilution 1/50, on the right is treated with synthetic peptide. (Original magnification:  $\times 200$ )

Predicted cell location: Cytoplasm

Positive control: Human lung cancer

Recommended dilution: 50-200



The image on the left is immunohistochemistry of paraffin-embedded Human lung cancer tissue using ml261484(ABO Antibody) at dilution 1/50, on the right is treated with synthetic peptide. (Original magnification:  $\times 200$ )

### ELISA

Recommended dilution: 1000-5000

联系电话: 4008-898-798, 021-61725725

联系QQ: 2881505695, 2881505696

邮箱: [mlbio\\_cn@yeah.net](mailto:mlbio_cn@yeah.net)

网址: [www.mlbio.cn](http://www.mlbio.cn)