

Anti-POU4F1 antibody

Cat. No.	ml261491
Package	25 µl/100 µl/200 µl
Storage	-20°C, pH7.4 PBS, 0.05% NaN ₃ , 40% Glycerol

Product overview

Description	Anti-POU4F1 rabbit polyclonal antibody
Applications	ELISA, IHC
Immunogen	Synthetic peptide of human POU4F1
Reactivity	Human, Mouse
Content	0.3 mg/ml
Host species	Rabbit
Ig class	Immunogen-specific rabbit IgG
Purification	Antigen affinity purification

Target information

Symbol	POU4F1
Full name	POU class 4 homeobox 1p
Synonyms	BRN3A; RDC-1; Oct-T1; brn-3A
Swissprot	Q01851

Target Background

This gene encodes a member of the POU-IV class of neural transcription factors. This protein is expressed in a subset of retinal ganglion cells and may be involved in the developing sensory nervous system. This protein may also promote the growth of cervical tumors. A translocation of this gene is associated with some adult acute myeloid leukemias.

订购热线: 4008-898-798

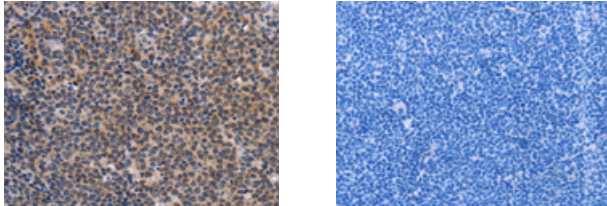
Applications

Immunohistochemistry

Predicted cell location: Nucleus

Positive control: Human Lymphoma

Recommended dilution: 25-100



The image on the left is immunohistochemistry of paraffin-embedded Human Lymphoma tissue using ml261491(POU4F1 Antibody) at dilution 1/25, on the right is treated with synthetic peptide. (Original magnification: $\times 200$)

ELISA

Recommended dilution: 1000-5000

联系电话: 4008-898-798, 021-61725725

联系QQ: 2881505695, 2881505696

邮箱: mlbio_cn@yeah.net

网址: www.mlbio.cn