

## Anti-PTPRC antibody

<b>Cat. No.</b>	ml261533
<b>Package</b>	25 µl/100 µl/200 µl
<b>Storage</b>	-20°C, pH7.4 PBS, 0.05% NaN <sub>3</sub> , 40% Glycerol

### Product overview

<b>Description</b>	Anti-PTPRC rabbit polyclonal antibody
<b>Applications</b>	ELISA, IHC
<b>Immunogen</b>	Synthetic peptide of human PTPRC
<b>Reactivity</b>	Human, Mouse, Rat
<b>Content</b>	0.7 mg/ml
<b>Host species</b>	Rabbit
<b>Ig class</b>	Immunogen-specific rabbit IgG
<b>Purification</b>	Antigen affinity purification

### Target information

<b>Symbol</b>	PTPRC
<b>Full name</b>	protein tyrosine phosphatase, receptor type, C
<b>Synonyms</b>	LCA; LY5; B220; CD45; L-CA; T200; CD45R; GP180
<b>Swissprot</b>	P08575

### Target Background

The protein encoded by this gene is a member of the protein tyrosine phosphatase (PTP) family. PTPs are known to be signaling molecules that regulate a variety of cellular processes including cell growth, differentiation, mitosis, and oncogenic transformation. This PTP contains an extracellular domain, a single transmembrane segment and two tandem intracytoplasmic catalytic domains, and thus is classified as a receptor type PTP. This PTP has been shown to be an essential regulator of T- and B-cell antigen receptor signaling. It functions through either direct interaction with components of the antigen receptor complexes, or by activating various Src family kinases required for the antigen receptor signaling.

订购热线: 4008-898-798

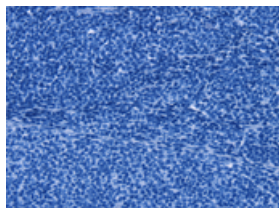
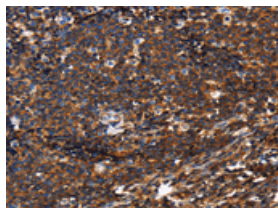
## Applications

### Immunohistochemistry

Predicted cell location: Cytoplasm

Positive control: Human Lymphoma

Recommended dilution: 100-300

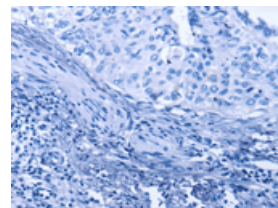
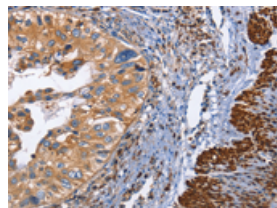


The image on the left is immunohistochemistry of paraffin-embedded Human Lymphoma tissue using ml261533(PTPRC Antibody) at dilution 1/60, on the right is treated with synthetic peptide. (Original magnification:  $\times 200$ )

Predicted cell location: Cytoplasm

Positive control: Human cervical cancer

Recommended dilution: 100-300



The image on the left is immunohistochemistry of paraffin-embedded Human cervical cancer tissue using ml261533(PTPRC Antibody) at dilution 1/60, on the right is treated with synthetic peptide. (Original magnification:  $\times 200$ )

### ELISA

Recommended dilution: 2000-10000

联系电话: 4008-898-798, 021-61725725

联系QQ: 2881505695, 2881505696

邮箱: [mlbio\\_cn@yeah.net](mailto:mlbio_cn@yeah.net)

网址: [www.mlbio.cn](http://www.mlbio.cn)