

Anti-FMN2 antibody

Cat. No.	ml261688
Package	25 µl/100 µl/200 µl
Storage	-20°C, pH7.4 PBS, 0.05% NaN ₃ , 40% Glycerol

Product overview

Description	Anti-FMN2 rabbit polyclonal antibody
Applications	ELISA, IHC
Immunogen	Synthetic peptide of human FMN2
Reactivity	Human
Content	0.5 mg/ml
Host species	Rabbit
Ig class	Immunogen-specific rabbit IgG
Purification	Antigen affinity purification

Target information

Symbol	FMN2
Full name	formin 2
Synonyms	
Swissprot	Q9NZ56

Target Background

Formin homology (FH) domain proteins (see FMN1; MIM 136535) play a role in cytoskeletal organization and/or establishment of cell polarity.

订购热线: 4008-898-798

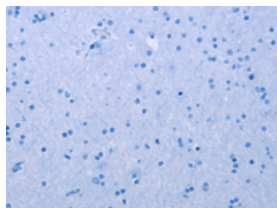
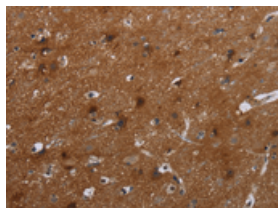
Applications

Immunohistochemistry

Predicted cell location: Cytoplasm

Positive control: Human brain

Recommended dilution: 25-100

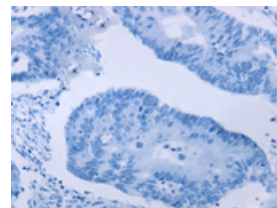
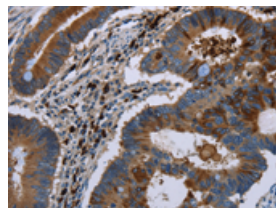


The image on the left is immunohistochemistry of paraffin-embedded Human brain tissue using ml261688(FMN2 Antibody) at dilution 1/20, on the right is treated with synthetic peptide. (Original magnification: $\times 200$)

Predicted cell location: Cytoplasm

Positive control: Human colon cancer

Recommended dilution: 25-100



The image on the left is immunohistochemistry of paraffin-embedded Human colon cancer tissue using ml261688(FMN2 Antibody) at dilution 1/20, on the right is treated with synthetic peptide. (Original magnification: $\times 200$)

ELISA

Recommended dilution: 1000-2000

联系电话: 4008-898-798, 021-61725725

联系QQ: 2881505695, 2881505696

邮箱: mlbio_cn@yeah.net

网址: www.mlbio.cn