

Anti-FPR3 antibody

Cat. No.	ml261690
Package	25 µl/100 µl/200 µl
Storage	-20°C, pH7.4 PBS, 0.05% NaN ₃ , 40% Glycerol

Product overview

Description	Anti-FPR3 rabbit polyclonal antibody
Applications	ELISA, IHC
Immunogen	Synthetic peptide of human FPR3
Reactivity	Human
Content	0.5 mg/ml
Host species	Rabbit
Ig class	Immunogen-specific rabbit IgG
Purification	Antigen affinity purification

Target information

Symbol	FPR3
Full name	formyl peptide receptor 3
Synonyms	FMLPY; FPRH1; FPRH2; FPRL2; RMLP-R-I; FML2_HUMAN
Swissprot	P25089

Target Background

The N-formyl peptide receptor (FPR) family is comprised of three members, FPR, FPR3 (also designated FPRL1, lipoxin A4 receptor, FPRH1 or FPR2) and FPR like-2 (FPRL2), all of which are chemotactic G protein-coupled receptors that contain seven transmembrane domains. These receptors are found on the surface of phagocytic leukocytes, such as neutrophils and monocytes, and each family member contains specific residues, which are responsible for determining its ligand specificity. FPR3 is a promiscuous receptor that binds to several ligands, including lipoxin A4, N-formyl-methionyl-leucyl-phenylalanine (fMLP), serum amyloid A (SAA), prion peptide and the 42 amino acid form of beta amyloid. Upon activation, FPR3 induces migration and calcium mobilization in human monocytes and neutrophils and is involved in inflammatory and host defense responses. FPR3 may mediate inflammation in prion and Alzheimer's diseases, which makes it a potential target for therapeutic agents.

订购热线: 4008-898-798

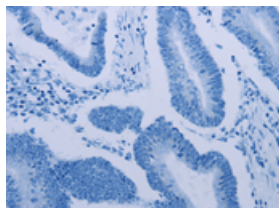
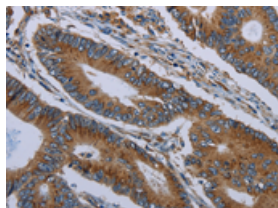
Applications

Immunohistochemistry

Predicted cell location: Cytoplasm

Positive control: Human colon cancer

Recommended dilution: 25-100

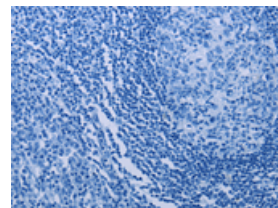
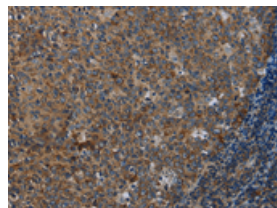


The image on the left is immunohistochemistry of paraffin-embedded Human colon cancer tissue using ml261690(FPR3 Antibody) at dilution 1/20, on the right is treated with synthetic peptide. (Original magnification: $\times 200$)

Predicted cell location: Cytoplasm

Positive control: Human tonsil

Recommended dilution: 25-100



The image on the left is immunohistochemistry of paraffin-embedded Human tonsil tissue using ml261690(FPR3 Antibody) at dilution 1/20, on the right is treated with synthetic peptide. (Original magnification: $\times 200$)

ELISA

Recommended dilution: 1000-2000

联系电话: 4008-898-798, 021-61725725

联系QQ: 2881505695, 2881505696

邮箱: mlbio_cn@yeah.net

网址: www.mlbio.cn