

## Anti-R3HCC1L antibody

<b>Cat. No.</b>	ml261709
<b>Package</b>	25 µl/100 µl/200 µl
<b>Storage</b>	-20°C, pH7.4 PBS, 0.05% NaN <sub>3</sub> , 40% Glycerol

### Product overview

<b>Description</b>	Anti-R3HCC1L rabbit polyclonal antibody
<b>Applications</b>	ELISA, IHC
<b>Immunogen</b>	Synthetic peptide of human R3HCC1L
<b>Reactivity</b>	Human, Mouse
<b>Content</b>	0.7 mg/ml
<b>Host species</b>	Rabbit
<b>Ig class</b>	Immunogen-specific rabbit IgG
<b>Purification</b>	Antigen affinity purification

### Target information

<b>Symbol</b>	R3HCC1L
<b>Full name</b>	R3H domain and coiled-coil containing 1-like
<b>Synonyms</b>	PSORT; GIDRP86; GIDRP88; C10orf28
<b>Swissprot</b>	Q7Z5L2

### Target Background

C10orf28 (chromosome 10 open reading frame 28), also known as GIDRP88 (growth inhibition and differentiation-related protein 88) or putative mitochondrial space protein 32.1, is a 792 amino acid protein that exists as three alternatively spliced isoforms. The gene encoding C10orf28 maps to human chromosome 10, which spans nearly 135 million base pairs, makes up approximately 4.5% of total DNA in cells and encodes nearly 1,200 genes. Several protein-coding genes, including those that encode for chemokines, cadherins, excision repair proteins, early growth response factors (Egrs) and fibroblast growth receptors (FGFRs), are located on chromosome 10. Defects in some of the genes that map to chromosome 10 are associated with Charcot-Marie Tooth disease, Jackson-Weiss syndrome, Usher syndrome, nonsyndromic deafness, Wolman's syndrome, Cowden syndrome, multiple endocrine neoplasia type 2 and porphyria.

订购热线: 4008-898-798

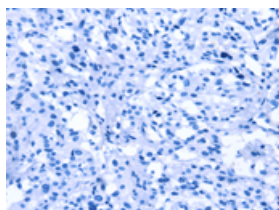
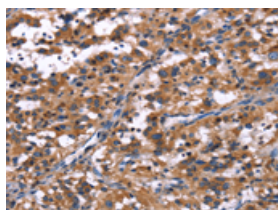
## Applications

### Immunohistochemistry

Predicted cell location: Cytoplasm

Positive control: Human thyroid cancer

Recommended dilution: 50-200

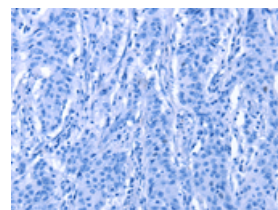
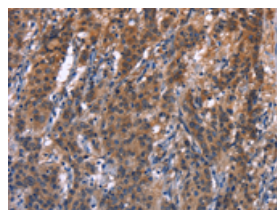


The image on the left is immunohistochemistry of paraffin-embedded Human thyroid cancer tissue using ml261709(R3HCC1L Antibody) at dilution 1/40, on the right is treated with synthetic peptide. (Original magnification:  $\times 200$ )

Predicted cell location: Cytoplasm

Positive control: Human gastric cancer

Recommended dilution: 50-200



The image on the left is immunohistochemistry of paraffin-embedded Human gastric cancer tissue using ml261709(R3HCC1L Antibody) at dilution 1/40, on the right is treated with synthetic peptide. (Original magnification:  $\times 200$ )

### ELISA

Recommended dilution: 2000-5000

联系电话: 4008-898-798, 021-61725725

联系QQ: 2881505695, 2881505696

邮箱: [mlbio\\_cn@yeah.net](mailto:mlbio_cn@yeah.net)

网址: [www.mlbio.cn](http://www.mlbio.cn)