

Anti-GPR65 antibody

Cat. No.	ml261730
Package	25 µl/100 µl/200 µl
Storage	-20°C, pH7.4 PBS, 0.05% NaN ₃ , 40% Glycerol

Product overview

Description	Anti-GPR65 rabbit polyclonal antibody
Applications	ELISA, IHC
Immunogen	Synthetic peptide of human GPR65
Reactivity	Human
Content	0.6 mg/ml
Host species	Rabbit
Ig class	Immunogen-specific rabbit IgG
Purification	Antigen affinity purification

Target information

Symbol	GPR65
Full name	G protein-coupled receptor 65
Synonyms	TDAG8; hTDAG8
Swissprot	Q8IYL9

Target Background

TDAG8 (for T-cell death-associated gene 8) is a seven transmembrane G protein-coupled receptor (GPCR) that was originally identified from a human thyroid cDNA library and subsequently shown to be expressed predominantly in thymus, lymph nodes, peripheral blood leukocytes and spleen. TDAG8, which is alternatively designated GPCR25, is grouped collectively with other GPCRs that are induced during T cell receptor engagement-mediated apoptosis and T cell activation, which also include G2A (for G2 accumulation) and P2Y2 (for P2 nucleotide) receptor.

订购热线: 4008-898-798

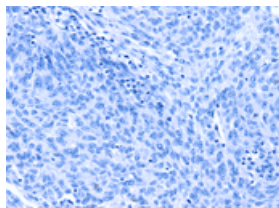
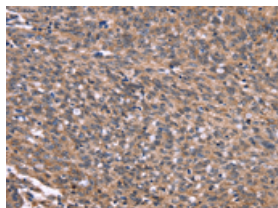
Applications

Immunohistochemistry

Predicted cell location: Cytoplasm

Positive control: Human ovarian cancer

Recommended dilution: 50-200

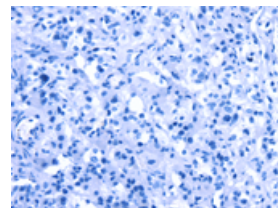
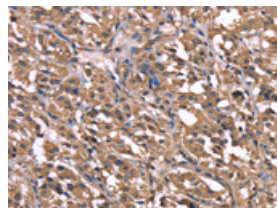


The image on the left is immunohistochemistry of paraffin-embedded Human ovarian cancer tissue using ml261730(GPR65 Antibody) at dilution 1/20, on the right is treated with synthetic peptide. (Original magnification: $\times 200$)

Predicted cell location: Cytoplasm

Positive control: Human thyroid cancer

Recommended dilution: 50-200



The image on the left is immunohistochemistry of paraffin-embedded Human thyroid cancer tissue using ml261730(GPR65 Antibody) at dilution 1/20, on the right is treated with synthetic peptide. (Original magnification: $\times 200$)

ELISA

Recommended dilution: 2000-5000

联系电话: 4008-898-798, 021-61725725

联系QQ: 2881505695, 2881505696

邮箱: mlbio_cn@yeah.net

网址: www.mlbio.cn