

Anti-HACE1 antibody

Cat. No.	ml261734
Package	25 µl/100 µl/200 µl
Storage	-20°C, pH7.4 PBS, 0.05% NaN ₃ , 40% Glycerol

Product overview

Description	Anti-HACE1 rabbit polyclonal antibody
Applications	ELISA, IHC
Immunogen	Synthetic peptide of human HACE1
Reactivity	Human, Mouse, Rat
Content	1.5 mg/ml
Host species	Rabbit
Ig class	Immunogen-specific rabbit IgG
Purification	Antigen affinity purification

Target information

Symbol	HACE1
Full name	HECT domain and ankyrin repeat containing E3 ubiquitin protein ligase 1
Synonyms	
Swissprot	Q8IYU2

Target Background

HACE1 (HECT domain and ankyrin repeat containing, E3 ubiquitin protein ligase 1), also known as KIAA1320, is a 909 amino acid protein that localizes to both the cytoplasm and the endoplasmic reticulum and contains one HECT domain and six ANK repeats. Expressed in kidney, heart and brain, HACE1 functions as an E3 ubiquitin-protein ligase that interacts with the proteasome and is thought to play a role in protein degradation. HACE1 is downregulated in Wilms tumor, suggesting a possible role in tumor suppression.

订购热线: 4008-898-798

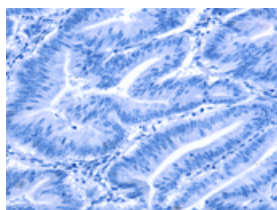
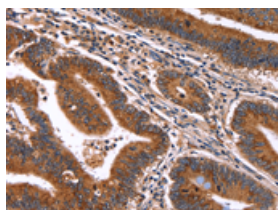
Applications

Immunohistochemistry

Predicted cell location: Cytoplasm

Positive control: Human colon cancer

Recommended dilution: 100-200

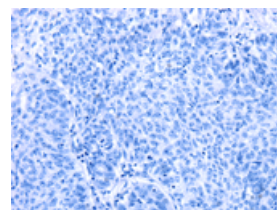
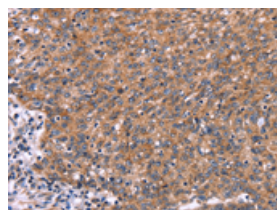


The image on the left is immunohistochemistry of paraffin-embedded Human colon cancer tissue using ml261734(HACE1 Antibody) at dilution 1/50, on the right is treated with synthetic peptide. (Original magnification: $\times 200$)

Predicted cell location: Cytoplasm

Positive control: Human ovarian cancer

Recommended dilution: 100-200



The image on the left is immunohistochemistry of paraffin-embedded Human ovarian cancer tissue using ml261734(HACE1 Antibody) at dilution 1/50, on the right is treated with synthetic peptide. (Original magnification: $\times 200$)

ELISA

Recommended dilution: 2000-5000

联系电话: 4008-898-798, 021-61725725

联系QQ: 2881505695, 2881505696

邮箱: mlbio_cn@yeah.net

网址: www.mlbio.cn