

Anti-HIPK1 antibody

Cat. No.	ml261743
Package	25 µl/100 µl/200 µl
Storage	-20°C, pH7.4 PBS, 0.05% NaN ₃ , 40% Glycerol

Product overview

Description	Anti-HIPK1 rabbit polyclonal antibody
Applications	ELISA, IHC
Immunogen	Synthetic peptide of human HIPK1
Reactivity	Human, Mouse, Rat
Content	0.3 mg/ml
Host species	Rabbit
Ig class	Immunogen-specific rabbit IgG
Purification	Antigen affinity purification

Target information

Symbol	HIPK1
Full name	homeodomain interacting protein kinase 1
Synonyms	Myak; Nbak2
Swissprot	Q86Z02

Target Background

The protein encoded by this gene belongs to the Ser/Thr family of protein kinases and HIPK subfamily. It phosphorylates homeodomain transcription factors and may also function as a co-repressor for homeodomain transcription factors. Alternative splicing results in four transcript variants encoding four distinct isoforms.

订购热线: 4008-898-798

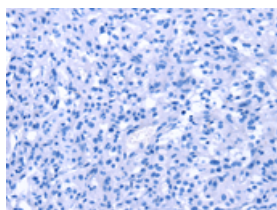
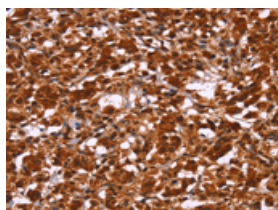
Applications

Immunohistochemistry

Predicted cell location: Nucleus

Positive control: Human thyroid cancer

Recommended dilution: 50-100

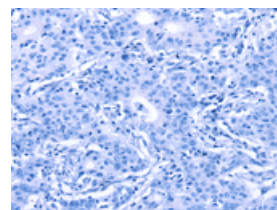
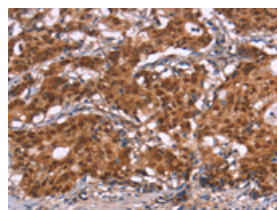


The image on the left is immunohistochemistry of paraffin-embedded Human thyroid cancer tissue using ml261743(HIPK1 Antibody) at dilution 1/30, on the right is treated with synthetic peptide. (Original magnification: $\times 200$)

Predicted cell location: Nucleus

Positive control: Human gastric cancer

Recommended dilution: 50-100



The image on the left is immunohistochemistry of paraffin-embedded Human gastric cancer tissue using ml261743(HIPK1 Antibody) at dilution 1/30, on the right is treated with synthetic peptide. (Original magnification: $\times 200$)

ELISA

Recommended dilution: 1000-2000

联系电话: 4008-898-798, 021-61725725

联系QQ: 2881505695, 2881505696

邮箱: mlbio_cn@yeah.net

网址: www.mlbio.cn