

## Anti-HMGCS1 antibody

<b>Cat. No.</b>	ml261746
<b>Package</b>	25 µl/100 µl/200 µl
<b>Storage</b>	-20°C, pH7.4 PBS, 0.05% NaN <sub>3</sub> , 40% Glycerol

### Product overview

<b>Description</b>	Anti-HMGCS1 rabbit polyclonal antibody
<b>Applications</b>	ELISA, IHC
<b>Immunogen</b>	Synthetic peptide of human HMGCS1
<b>Reactivity</b>	Human
<b>Content</b>	0.6 mg/ml
<b>Host species</b>	Rabbit
<b>Ig class</b>	Immunogen-specific rabbit IgG
<b>Purification</b>	Antigen affinity purification

### Target information

<b>Symbol</b>	HMGCS1
<b>Full name</b>	3-hydroxy-3-methylglutaryl-CoA synthase 1 (soluble)
<b>Synonyms</b>	HMGCS
<b>Swissprot</b>	Q01581

### Target Background

HMG-CoA Synthase exists as both a mitochondrial (mHMGCS) and cytoplasmic (cHMGCS) enzyme that condenses acetyl-CoA with acetoacetyl-CoA to form HMG-CoA. The HMG-CoA produced by cHMGCS is transformed into mevalonate by HMG-CoA reductase, which starts isoprenoid biosynthesis. End products of the isoprenoid pathway include cholesterol, ubiquinone, dolichol, isopentenyl adenosine and farnesyl groups. mHMGCS, together with HMG-CoA Lyase, is responsible for ketone body biosynthesis. mHMGCS is expressed in liver and kidney. Fasting, cAMP and fatty acids increase the level of transcription of mHMGCS, while feeding and insulin repress it. A regulatory element within the mHMGCS promoter confers transcriptional regulation by PPAR, RXR, COUP-TF and HNF-4.

订购热线: 4008-898-798

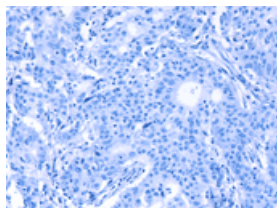
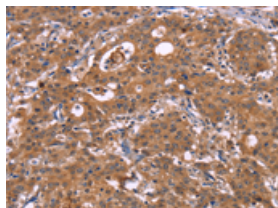
## Applications

### Immunohistochemistry

Predicted cell location: Cytoplasm

Positive control: Human gasrtic cancer

Recommended dilution: 50-200

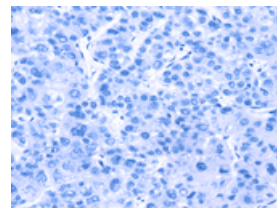
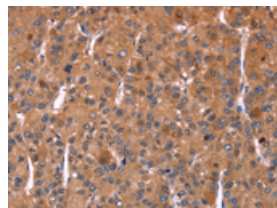


The image on the left is immunohistochemistry of paraffin-embedded Human gasrtic cancer tissue using ml261746(HMGCS1 Antibody) at dilution 1/40, on the right is treated with synthetic peptide. (Original magnification: ×200)

Predicted cell location: Cytoplasm

Positive control: Human liver cancer

Recommended dilution: 50-200



The image on the left is immunohistochemistry of paraffin-embedded Human liver cancer tissue using ml261746(HMGCS1 Antibody) at dilution 1/40, on the right is treated with synthetic peptide. (Original magnification: ×200)

### ELISA

Recommended dilution: 2000-5000

联系电话: 4008-898-798, 021-61725725

联系QQ: 2881505695, 2881505696

邮箱: [mlbio\\_cn@yeah.net](mailto:mlbio_cn@yeah.net)

网址: [www.mlbio.cn](http://www.mlbio.cn)