

## Anti-CERS4 antibody

<b>Cat. No.</b>	ml261849
<b>Package</b>	25 µl/100 µl/200 µl
<b>Storage</b>	-20°C, pH7.4 PBS, 0.05% NaN <sub>3</sub> , 40% Glycerol

### Product overview

<b>Description</b>	Anti-CERS4 rabbit polyclonal antibody
<b>Applications</b>	ELISA, IHC
<b>Immunogen</b>	Synthetic peptide of human CERS4
<b>Reactivity</b>	Human
<b>Content</b>	0.8 mg/ml
<b>Host species</b>	Rabbit
<b>Ig class</b>	Immunogen-specific rabbit IgG
<b>Purification</b>	Antigen affinity purification

### Target information

<b>Symbol</b>	CERS4
<b>Full name</b>	ceramide synthase 4
<b>Synonyms</b>	Trh1; LASS4
<b>Swissprot</b>	Q9HA82

### Target Background

The LASS (longevity assurance homolog) family members are highly conserved from yeasts to mammals. Six members of this family of proteins have been characterized (LASS1, LASS2, LASS3, LASS4, LASS5 and LASS6) and they are all involved in sphingolipid synthesis. LASS4 is a 394 amino acid endoplasmic reticulum, multi-pass membrane protein. LASS4 increases the levels of long ceramides such as C22:0- and C24:0-ceramides. In cells deficient for CLN9, as observed in neuronal ceroid lipofuscinosis (NCL) or Batten disease, LASS4 can increase ceramide levels and partially correct growth and apoptosis.

订购热线: 4008-898-798

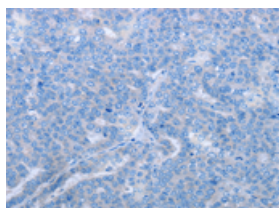
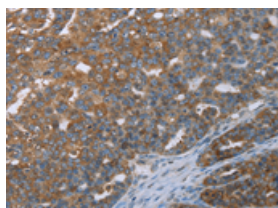
## Applications

### Immunohistochemistry

Predicted cell location: Cytoplasm

Positive control: Human ovarian cancer

Recommended dilution: 50-200

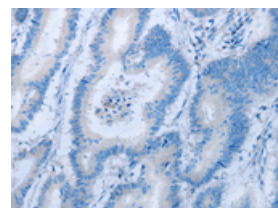
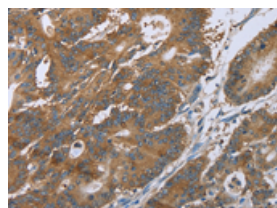


The image on the left is immunohistochemistry of paraffin-embedded Human ovarian cancer tissue using ml261849(CERS4 Antibody) at dilution 1/35, on the right is treated with synthetic peptide. (Original magnification:  $\times 200$ )

Predicted cell location: Cytoplasm

Positive control: Human colon cancer

Recommended dilution: 50-200



The image on the left is immunohistochemistry of paraffin-embedded Human colon cancer tissue using ml261849(CERS4 Antibody) at dilution 1/35, on the right is treated with synthetic peptide. (Original magnification:  $\times 200$ )

### ELISA

Recommended dilution: 2000-5000

联系电话: 4008-898-798, 021-61725725

联系QQ: 2881505695, 2881505696

邮箱: [mlbio\\_cn@yeah.net](mailto:mlbio_cn@yeah.net)

网址: [www.mlbio.cn](http://www.mlbio.cn)