

Anti-NCKAP1 antibody

Cat. No.	ml261939
Package	25 µl/100 µl/200 µl
Storage	-20°C, pH7.4 PBS, 0.05% NaN ₃ , 40% Glycerol

Product overview

Description	Anti-NCKAP1 rabbit polyclonal antibody
Applications	ELISA, IHC
Immunogen	Synthetic peptide of human NCKAP1
Reactivity	Human, Mouse, Rat
Content	0.6 mg/ml
Host species	Rabbit
Ig class	Immunogen-specific rabbit IgG
Purification	Antigen affinity purification

Target information

Symbol	NCKAP1
Full name	NCK-associated protein 1
Synonyms	HEM2; NAP1; NAP125; p125Nap1
Swissprot	Q9Y2A7

Target Background

NAP125, also known as NCKAP1 (NCK-associated protein 1), p125Nap1 or membrane-associated protein HEM-2, is a 1,128 amino acid single pass membrane protein that exists as two alternatively spliced isoforms and belongs to the HEM-1/HEM-2 family. While widely expressed, NAP125 is found at highest levels in heart, brain and skeletal muscle where it regulates Rac-dependent actin remodeling as part of a lamellipodial complex with WAVE2, Abi-1 and CYFIP1. NAP125 localizes to the cytoplasmic side of lamellipodium membrane and is encoded by a gene that maps to human chromosome 2q32.1 and mouse chromosome 2 C3. NAP125 expression is markedly reduced in Alzheimer disease (AD)-affected brains, suggesting a possible role in the disease.

订购热线: 4008-898-798

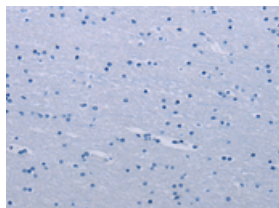
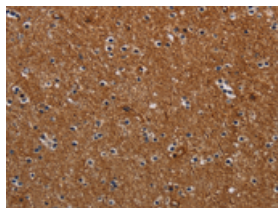
Applications

Immunohistochemistry

Predicted cell location: Cytoplasm

Positive control: Human brain

Recommended dilution: 25-100



The image on the left is immunohistochemistry of paraffin-embedded Human brain tissue using ml261939(NCKAP1 Antibody) at dilution 1/30, on the right is treated with synthetic peptide. (Original magnification: $\times 200$)

ELISA

Recommended dilution: 1000-2000

联系电话: 4008-898-798, 021-61725725

联系QQ: 2881505695, 2881505696

邮箱: mlbio_cn@yeah.net

网址: www.mlbio.cn