

Anti-NPHS2 antibody

Cat. No.	ml261973
Package	25 µl/100 µl/200 µl
Storage	-20°C, pH7.4 PBS, 0.05% NaN ₃ , 40% Glycerol

Product overview

Description	Anti-NPHS2 rabbit polyclonal antibody
Applications	ELISA, IHC
Immunogen	Synthetic peptide of human NPHS2
Reactivity	Human, Mouse, Rat
Content	1.4 mg/ml
Host species	Rabbit
Ig class	Immunogen-specific rabbit IgG
Purification	Antigen affinity purification

Target information

Symbol	NPHS2
Full name	nephrosis 2, idiopathic, steroid-resistant
Synonyms	PDCN; SRN1
Swissprot	Q9NP85

Target Background

This gene encodes the glomerular protein podocin which plays a role in the regulation of glomerular permeability, and acts as a linker between the plasma membrane and the cytoskeleton. Defects in this gene are the cause of autosomal recessive steroid-resistant nephrotic syndrome (SRN). SRN is characterized by onset between three months and five years, resistance to steroid therapy and rapid progression to end-stage renal disease. An alternative splice variant has been described but its full length sequence has not been determined.

订购热线: 4008-898-798

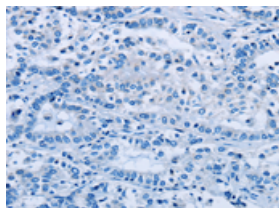
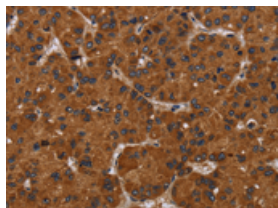
Applications

Immunohistochemistry

Predicted cell location: Cytoplasm

Positive control: Human liver cancer

Recommended dilution: 50-200

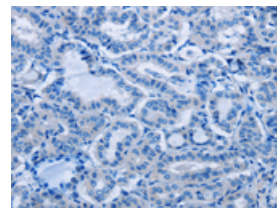
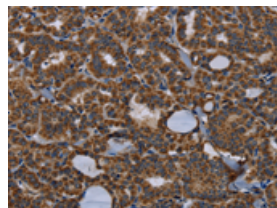


The image on the left is immunohistochemistry of paraffin-embedded Human liver cancer tissue using ml261973(NPHS2 Antibody) at dilution 1/40, on the right is treated with synthetic peptide. (Original magnification: $\times 200$)

Predicted cell location: Cytoplasm

Positive control: Human thyroid cancer

Recommended dilution: 50-200



The image on the left is immunohistochemistry of paraffin-embedded Human thyroid cancer tissue using ml261973(NPHS2 Antibody) at dilution 1/40, on the right is treated with synthetic peptide. (Original magnification: $\times 200$)

ELISA

Recommended dilution: 2000-5000

联系电话: 4008-898-798, 021-61725725

联系QQ: 2881505695, 2881505696

邮箱: mlbio_cn@yeah.net

网址: www.mlbio.cn