

Anti-NPRL2 antibody

Cat. No.	ml261974
Package	25 µl/100 µl/200 µl
Storage	-20°C, pH7.4 PBS, 0.05% NaN ₃ , 40% Glycerol

Product overview

Description	Anti-NPRL2 rabbit polyclonal antibody
Applications	ELISA, IHC
Immunogen	Synthetic peptide of human NPRL2
Reactivity	Human, Mouse
Content	0.9 mg/ml
Host species	Rabbit
Ig class	Immunogen-specific rabbit IgG
Purification	Antigen affinity purification

Target information

Symbol	NPRL2
Full name	nitrogen permease regulator-like 2
Synonyms	NPR2; NPR2L; TUSC4
Swissprot	Q8WTW4

Target Background

NPRL2, also known as TUSC4 (tumor suppressor candidate 4), is a 380 amino acid protein that contains a bipartite nuclear localization signal and a granulin protein-binding domain. It is highly expressed in skeletal muscle, followed by brain, liver and pancreas, with lower expression in lung, kidney, placenta and heart. NPRL2 is also expressed in most lung cancer cell lines and may be involved in tumor suppression. NPRL2 may play a role in mismatch repair, cell cycle checkpoint signaling and activation of apoptotic pathways. It may also enhance the therapeutic efficacy of chemotherapy drugs such as cisplatin by resensitizing patients resistant to cisplatin treatment. The gene encoding NPRL2 is conserved between species and is expressed as two isoforms due to alternative splicing events.

订购热线: 4008-898-798

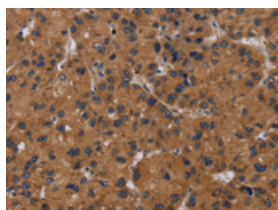
Applications

Immunohistochemistry

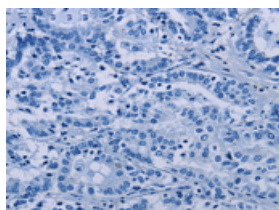
Predicted cell location: Cytoplasm

Positive control: Human liver cancer

Recommended dilution: 50-200



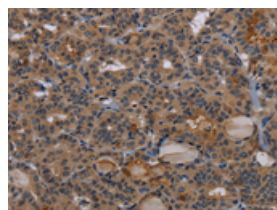
The image on the left is immunohistochemistry of paraffin-embedded Human liver cancer tissue using ml261974(NPRL2 Antibody) at dilution 1/50, on the right is treated with synthetic peptide. (Original magnification: $\times 200$)



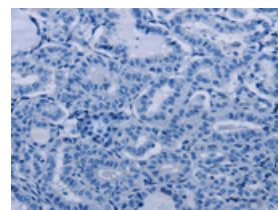
Predicted cell location: Cytoplasm

Positive control: Human thyroid cancer

Recommended dilution: 50-200



The image on the left is immunohistochemistry of paraffin-embedded Human thyroid cancer tissue using ml261974(NPRL2 Antibody) at dilution 1/50, on the right is treated with synthetic peptide. (Original magnification: $\times 200$)



ELISA

Recommended dilution: 2000-5000

联系电话: 4008-898-798, 021-61725725

联系QQ: 2881505695, 2881505696

邮箱: mlbio_cn@yeah.net

网址: www.mlbio.cn