

Anti-SH2D3A antibody

Cat. No.	ml261980
Package	25 µl/100 µl/200 µl
Storage	-20°C, pH7.4 PBS, 0.05% NaN ₃ , 40% Glycerol

Product overview

Description	Anti-SH2D3A rabbit polyclonal antibody
Applications	ELISA, IHC
Immunogen	Synthetic peptide of human SH2D3A
Reactivity	Human
Content	1 mg/ml
Host species	Rabbit
Ig class	Immunogen-specific rabbit IgG
Purification	Antigen affinity purification

Target information

Symbol	SH2D3A
Full name	SH2 domain containing 3A
Synonyms	NSP1
Swissprot	Q9BRG2

Target Background

SH2D3A (SH2 domain containing 3A), also known as novel SH2-containing protein 1, is a 576 amino acid protein that is thought to play a role in JNK activation. SH2D3A interacts with p130 Cas and is found at low levels in fetal kidney, fetal lung, placenta, adult pancreas, kidney and lung. Subject to post-translational phosphorylation on multiple tyrosine residues, SH2D3A contains one Src homology 2 (SH2) domain. SH2 domains bind to tyrosine-phosphorylated regions of target proteins, frequently linking activated growth factors to putative signal transduction proteins.

订购热线: 4008-898-798

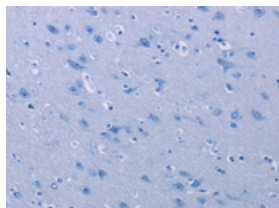
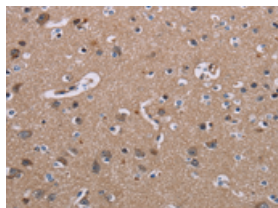
Applications

Immunohistochemistry

Predicted cell location: Cytoplasm

Positive control: Human brain

Recommended dilution: 25-100

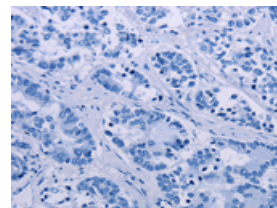
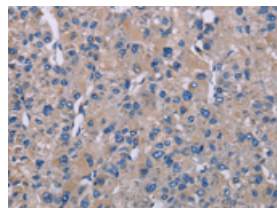


The image on the left is immunohistochemistry of paraffin-embedded Human brain tissue using ml261980(SH2D3A Antibody) at dilution 1/40, on the right is treated with synthetic peptide. (Original magnification: $\times 200$)

Predicted cell location: Cytoplasm

Positive control: Human liver cancer

Recommended dilution: 25-100



The image on the left is immunohistochemistry of paraffin-embedded Human liver cancer tissue using ml261980(SH2D3A Antibody) at dilution 1/40, on the right is treated with synthetic peptide. (Original magnification: $\times 200$)

ELISA

Recommended dilution: 1000-2000

联系电话: 4008-898-798, 021-61725725

联系QQ: 2881505695, 2881505696

邮箱: mlbio_cn@yeah.net

网址: www.mlbio.cn