

Anti-KDM4B antibody

Cat. No.	ml262023
Package	25 µl/100 µl/200 µl
Storage	-20°C, pH7.4 PBS, 0.05% NaN ₃ , 40% Glycerol

Product overview

Description	Anti-KDM4B rabbit polyclonal antibody
Applications	ELISA, IHC
Immunogen	Synthetic peptide of human KDM4B
Reactivity	Human
Content	1 mg/ml
Host species	Rabbit
Ig class	Immunogen-specific rabbit IgG
Purification	Antigen affinity purification

Target information

Symbol	KDM4B
Full name	lysine (K)-specific demethylase 4B
Synonyms	JMJD2B; TDRD14B
Swissprot	O94953

Target Background

JMJD2B (JmjC domain-containing histone demethylation protein 3A) is a 1,064 amino acid protein encoded by the human gene JMJD2B. JMJD2B belongs to the JMJD2B histone demethylase family and contains one JmjC domain, one JmjN domain, two PHD-type zinc fingers and two Tudor domains. The two Tudor domains recognize and bind methylated histones and have an interdigitated structure; the unusual fold is required for its ability to bind methylated histone tails. JMJD2B is a histone demethylase that specifically demethylates Lys 9 residues of Histone H3, thereby playing a role in histone code. It does not demethylate Histone H3 Lys 4, H3 Lys 27, H3 Lys 36 or H4 Lys 20, however, and is only able to demethylate trimethylated H3 Lys-9 and has weaker activity than JMJD2A, JMJD2C and JMJD2D. JMJD2B demethylation of Lysine residues will generate formaldehyde and succinate. JMJD2B is a ubiquitously expressed nuclear protein.

订购热线: 4008-898-798

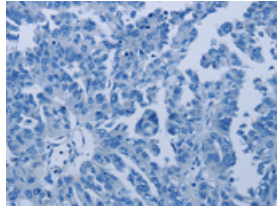
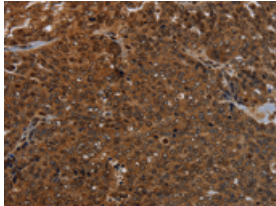
Applications

Immunohistochemistry

Predicted cell location: Nucleus

Positive control: Human ovarian cancer

Recommended dilution: 50-200

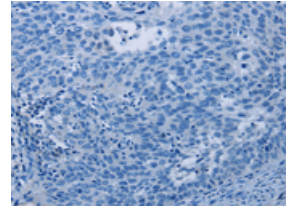
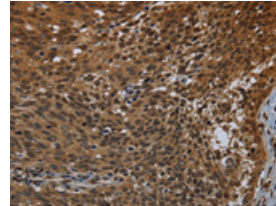


The image on the left is immunohistochemistry of paraffin-embedded Human ovarian cancer tissue using ml262023(KDM4B Antibody) at dilution 1/50, on the right is treated with synthetic peptide. (Original magnification: $\times 200$)

Predicted cell location: Nucleus

Positive control: Human cervical cancer

Recommended dilution: 50-200



The image on the left is immunohistochemistry of paraffin-embedded Human cervical cancer tissue using ml262023(KDM4B Antibody) at dilution 1/50, on the right is treated with synthetic peptide. (Original magnification: $\times 200$)

ELISA

Recommended dilution: 2000-5000

联系电话: 4008-898-798, 021-61725725

联系QQ: 2881505695, 2881505696

邮箱: mlbio_cn@yeah.net

网址: www.mlbio.cn